

WAAS CH <b>65705</b> <b>W03A</b>	APP CRS <b>027°</b>	Rwy Ldg TDZE Apt Elev	<b>5008</b> <b>996</b> <b>996</b>
--	------------------------	-----------------------------	---

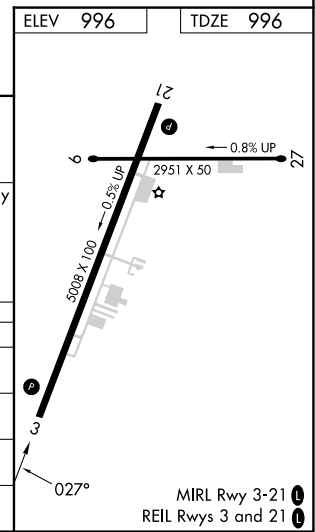
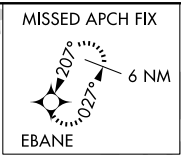
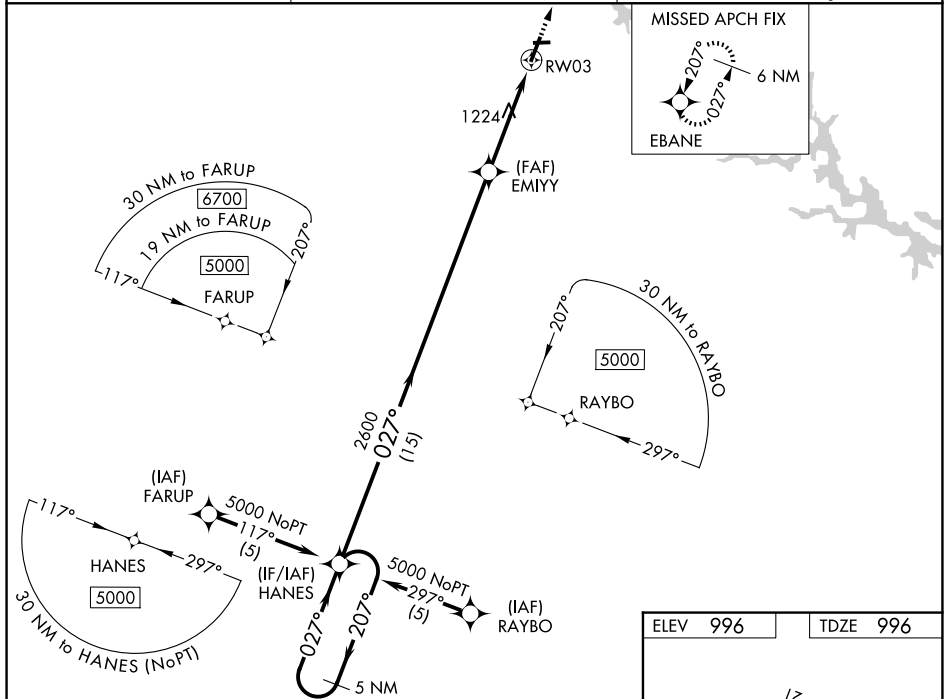
# RNAV (GPS) RWY 3

TOCCOA RG LETOURNEAU FLD (TOC)

**⚠️** Baro-VNAV and VDP NA when using Gainesville altimeter setting. For uncorrected Baro-VNAV systems, LNAV/VNAV NA below -8°C (18°F) or above 54°C (130°F). DME/DME RNP-0.3 NA. When local altimeter setting not received, use Gainesville altimeter setting and increase LPV DA to 1507 feet, LNAV/VNAV DA to 1859 and all MDA 120 feet. Increase LPV all Cats visibility  $\frac{3}{8}$  mile, increase LNAV Cat B visibility  $\frac{1}{4}$  mile, Cats C/D  $\frac{1}{2}$  mile and Circling Cats A/B/C visibility  $\frac{1}{4}$  mile. Helicopter visibility reduction below  $\frac{3}{4}$  SM NA.

**MISSED APPROACH:** Climb to 6600 direct EBANE and hold, continue climb-in-hold to 6600.

AWOS-3 <b>119.625</b>	ATLANTA CENTER <b>134.8 379.95</b>	UNICOM <b>122.8 (CTAF) 0</b>
--------------------------	---------------------------------------	---------------------------------



5 NM Holding Pattern	VGSI and RNAV glidepath not coincident (VGSI Angle 3.25/TCH 32).	6600	EBANE
5000	HANES	EMIYY	*LNAV only
GP 3.44° TCH 40	2600	*1.9 NM to RW03	RW03
	15 NM	2.4 NM	1.9 NM

CATEGORY	A	B	C	D
LPV DA	1392-1 $\frac{1}{8}$	396 (400-1 $\frac{1}{8}$ )		NA
LNAV/VNAV DA	1744-2 $\frac{1}{2}$	748 (800-2 $\frac{1}{2}$ )		NA
LNAV MDA	1680-1	684 (700-1)	1680-2	684 (700-2)
CIRCLING	1720-1	724 (800-1)	1760-2 $\frac{1}{4}$ 764 (800-2 $\frac{1}{4}$ )	2480-3 1484 (1500-3)

SE-4, 14 MAY 2026 to 11 JUN 2026

SE-4, 14 MAY 2026 to 11 JUN 2026