

LOC I-JBR 110.15	APP CRS 230°	Rwy Ldg TDZE Apt Elev	6200 262 262
----------------------------	------------------------	-----------------------------	-----------------------------------------

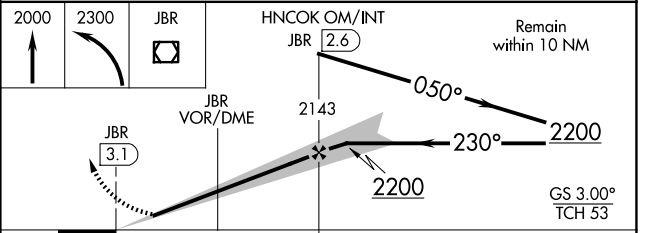
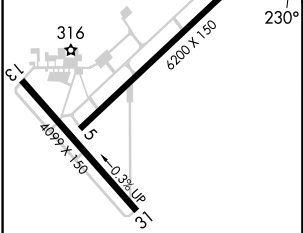
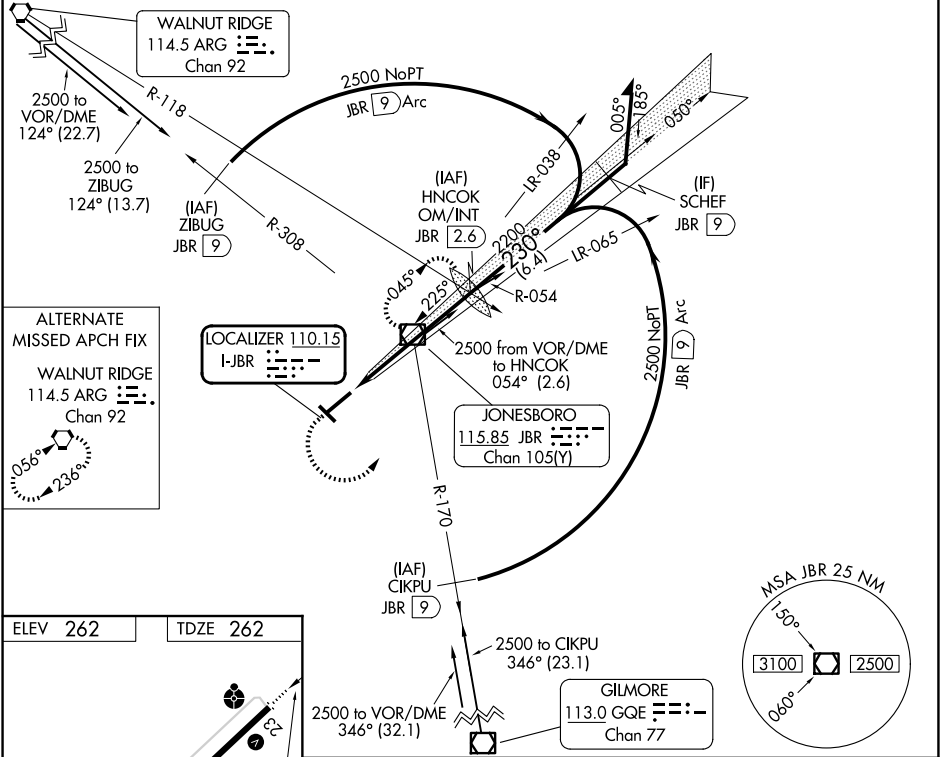
ILS or LOC RWY 23

JONESBORO MUNI (JBR)

⚠ Circling NA northwest of Rwy 5-23. Rwy 23 helicopter visibility reduction below 3/4 SM NA. When local altimeter not received, use Walnut Ridge altimeter setting; increase DA to 600 feet and all visibilities 1/2 SM; increase all MDAs 60 feet, S-LOC 23 Cat C/D visibility 1/2 SM and Circling Cat C 1/4 SM. For inop ALS, increase S-ILS 23 Cat A/B visibility to 1/2 SM and S-LOC 23 Cat C/D to 1 3/8 SM. For inop ALS when using Walnut Ridge altimeter setting, increase S-ILS 23 Cat A/B visibility to 1 SM. When using Walnut Ridge altimeter setting, inop table does not apply to S-LOC 23 Cats C/D. Circling Rwy 31 NA at night.

ODALS
MISSED APPROACH: Climb to 2000 then climbing left turn to 2300 direct JBR VOR/DME and hold.

ASOS 118.525	MEMPHIS CENTER 120.075 289.4	UNICOM 123.0 (CTAF)
------------------------	----------------------------------------	-------------------------------



MIRL Rwy 5-23 and 13-31 FAF to MAP 5.7 NM	<table border="1"> <tr> <td>Knots</td> <td>60</td> <td>90</td> <td>120</td> <td>150</td> <td>180</td> </tr> <tr> <td>Min:Sec</td> <td>5:42</td> <td>3:48</td> <td>2:51</td> <td>2:17</td> <td>1:54</td> </tr> </table>				Knots	60	90	120	150	180	Min:Sec	5:42	3:48	2:51	2:17	1:54
Knots	60	90	120	150	180											
Min:Sec	5:42	3:48	2:51	2:17	1:54											
CATEGORY	A	B	C	D												
S-ILS 23	546-3/4		284 (300-3/4)													
S-LOC 23	720-3/4 458 (500-3/4)		720-1 1/4 458 (500-1 1/4)													
CIRCLING	740-1 478 (500-1)		820-1 1/2 1080-2 3/4 558 (600-1 1/2) 818 (900-2 3/4)													

SC-1, 14 MAY 2026 to 11 JUN 2026

SC-1, 14 MAY 2026 to 11 JUN 2026