

WAAS CH 86401 W27A	APP CRS 274°	Rwy Ldg 6356 TDZE 881 Apt Elev 881
--	------------------------	---

RNAV (GPS) RWY 27

AUBURN/DEKALB EXEC (GWB)

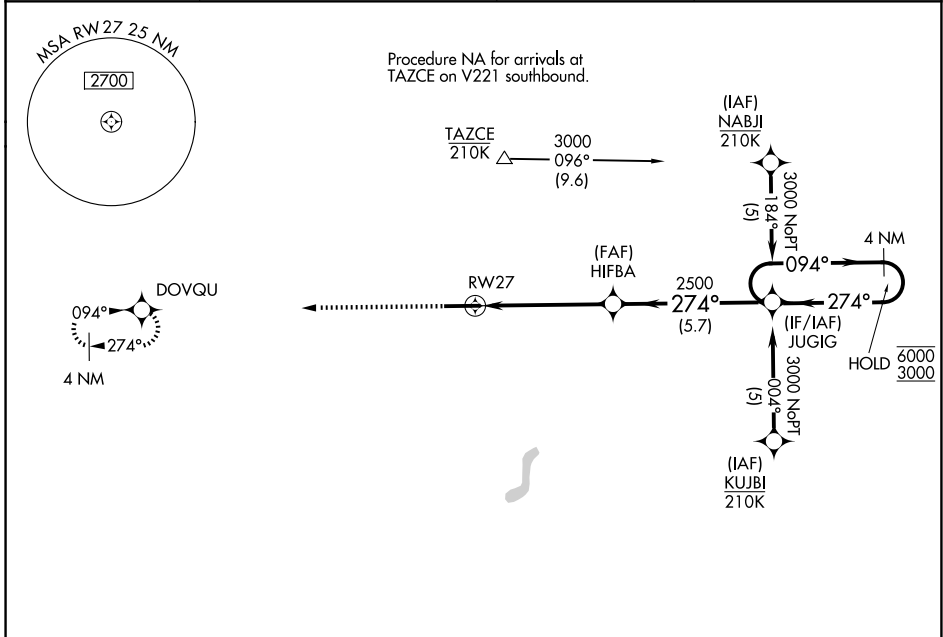
RNP APCH - GPS.

⚠ For uncompensated Baro-VNAV systems, LNAV/VNAV NA below -16°C or above 54°C.



MISSED APPROACH:
Climb to 3000 direct
DOVQU and hold.

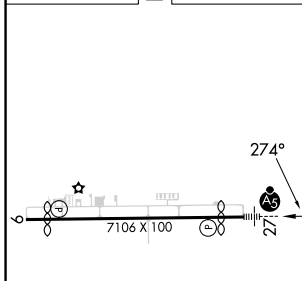
AWOS-3P 124.15	FORT WAYNE APP CON 127.2 284.6	CLNC DEL 126.6	UNICOM 123.0 (CTAF)
--------------------------	--	--------------------------	-------------------------------



EC-2, 14 MAY 2026 to 11 JUN 2026

EC-2, 14 MAY 2026 to 11 JUN 2026

ELEV 881	D	TDZE 881
----------	----------	----------



CATEGORY	A	B	C	D
LPV DA		1081-1/2	200 (200-1/2)	
LNAV/ VNAV DA		1314-3/4	433 (500-3/4)	
LNAV MDA	1320-1/2	439 (500-1/2)	1320-3/4	439 (500-3/4)
CIRCLING	1320-1 439 (500-1)	1560-1 679 (700-1)	1720-2 1/2 839 (900-2 1/2)	1720-2 3/4 839 (900-2 3/4)

AUBURN, INDIANA
Amdt 1 31OCT24

41°18'N-85°04'W

AUBURN/DEKALB EXEC (GWB) RNAV (GPS) RWY 27