

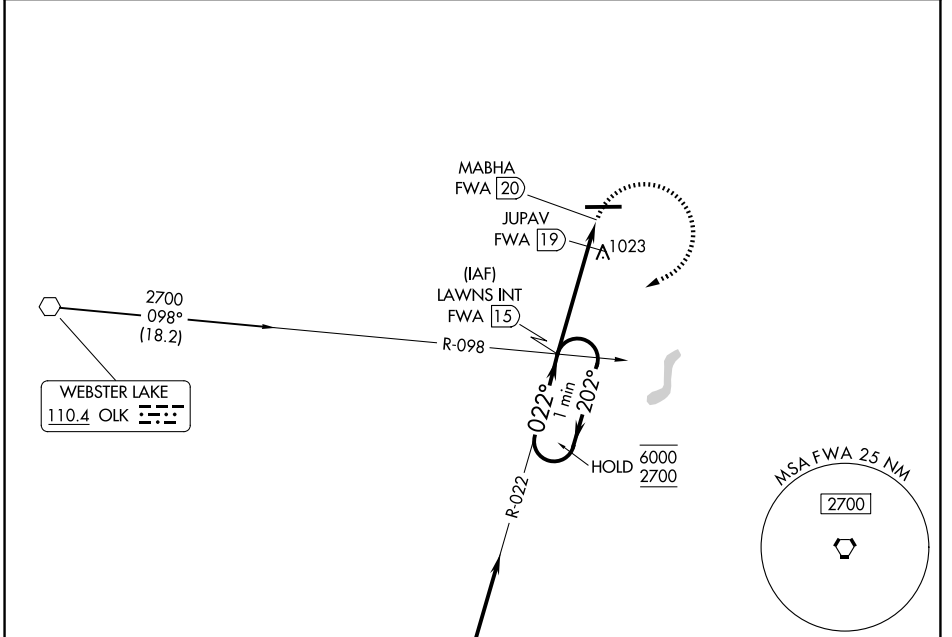
VORTAC FWA <b>117.8</b> Chan 125	APP CRS <b>022°</b>	Rwy Ldg TDZE Apt Elev <b>N/A</b> <b>881</b>
--	------------------------	--

# VOR-A

AUBURN/DEKALB EXEC (GWB)

**⚠** MISSED APPROACH: Climbing right turn to 2700 on FWA R-022 to LAWNS INT/FWA 1.5 DME and hold, continue climb-in-hold to 2700.

AWOS-3P <b>124.15</b>	FORT WAYNE APP CON <b>127.2 284.6</b>	CLNC DEL <b>126.6</b>	UNICOM <b>123.0 (CTAF)</b>
--------------------------	--	--------------------------	-------------------------------

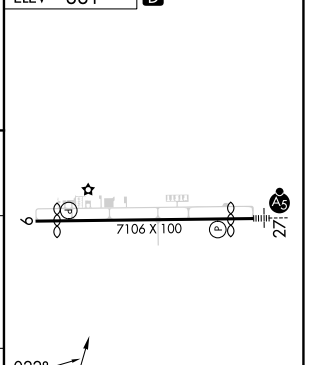
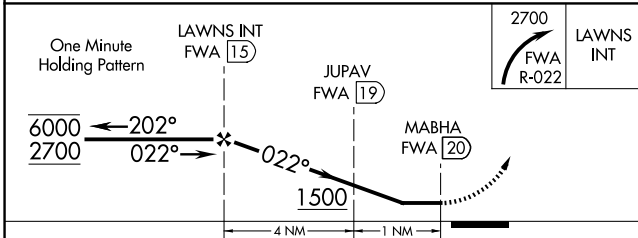


EC-2, 14 MAY 2026 to 11 JUN 2026

EC-2, 14 MAY 2026 to 11 JUN 2026

IF/IAF  
FORT WAYNE  
117.8 FWA  
Chan 125

ELEV 881 **D**



CATEGORY	A	B	C	D
CIRCLING	1500-1 619 (700-1)	1560-1 679 (700-1)	1720-2½ 839 (900-2½)	1720-2¾ 839 (900-2¾)
JUPAV FIX MINIMUMS				
CIRCLING	1360-1 479 (500-1)	1560-1 679 (700-1)	1720-2½ 839 (900-2½)	1720-2¾ 839 (900-2¾)

022° ↗

REIL Rwy 9 and 27 **Ⓜ**  
MIRL Rwy 9-27 **Ⓜ**

FAF to MAP 5 NM

Knots	60	90	120	150	180
Min:Sec	5:00	3:20	2:30	2:00	1:40

# VOR-A