

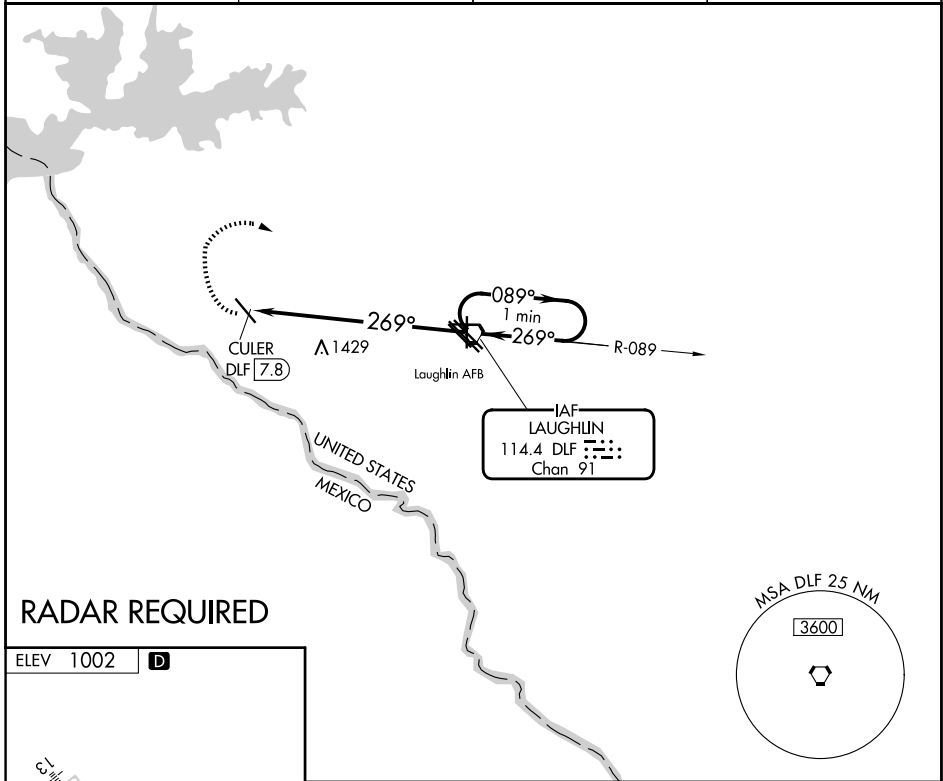
VORTAC DLF <b>114.4</b> Chan <b>91</b>	APP CRS <b>269°</b>	Rwy Ldg TDZE Apt Elev <b>1002</b>	<b>N/A</b> <b>N/A</b> <b>1002</b>
--	------------------------	--	---

**VOR-A**  
DEL RIO INTL (DRT)

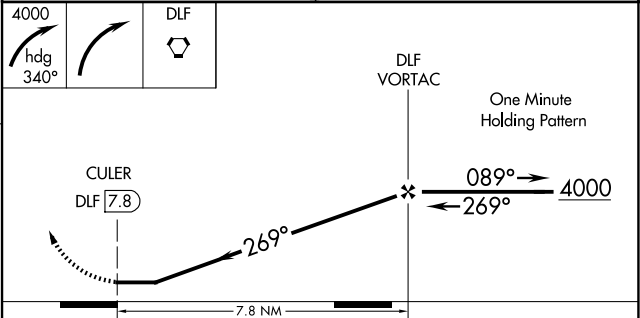
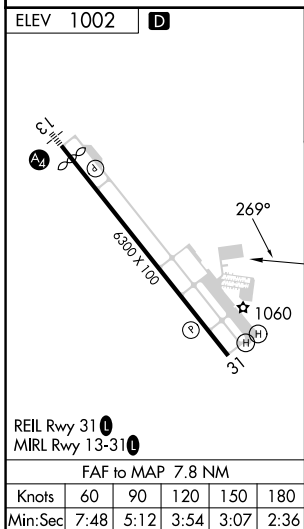
**⚠** Circling NA for Cat D SW of Rwy 13-31. If local altimeter setting not received, use Laughlin AFB altimeter setting and increase all MDAs 40 feet.

**MISSED APPROACH:** Climbing right turn to 4000 via heading 340° then right turn direct DLF VORTAC and hold.

ASOS <b>118.525</b>	DEL RIO APP CON * <b>119.6 259.1</b>	CLNC DEL <b>120.5</b>	UNICOM <b>122.8 (CTAF) 0</b>
------------------------	---	--------------------------	---------------------------------



**RADAR REQUIRED**



CATEGORY	A	B	C	D
CIRCLING	1780-1 778 (800-1)	1780-1¼ 778 (800-1¼)	1780-2¼ 778 (800-2¼)	1780-2½ 778 (800-2½)