

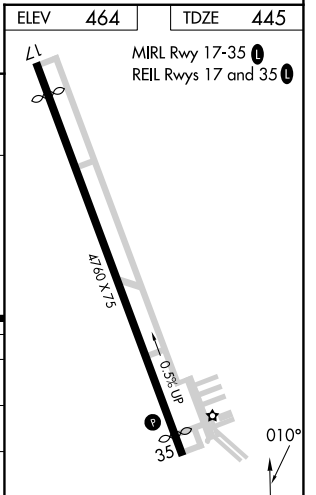
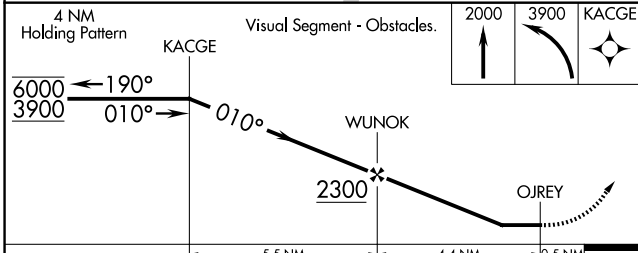
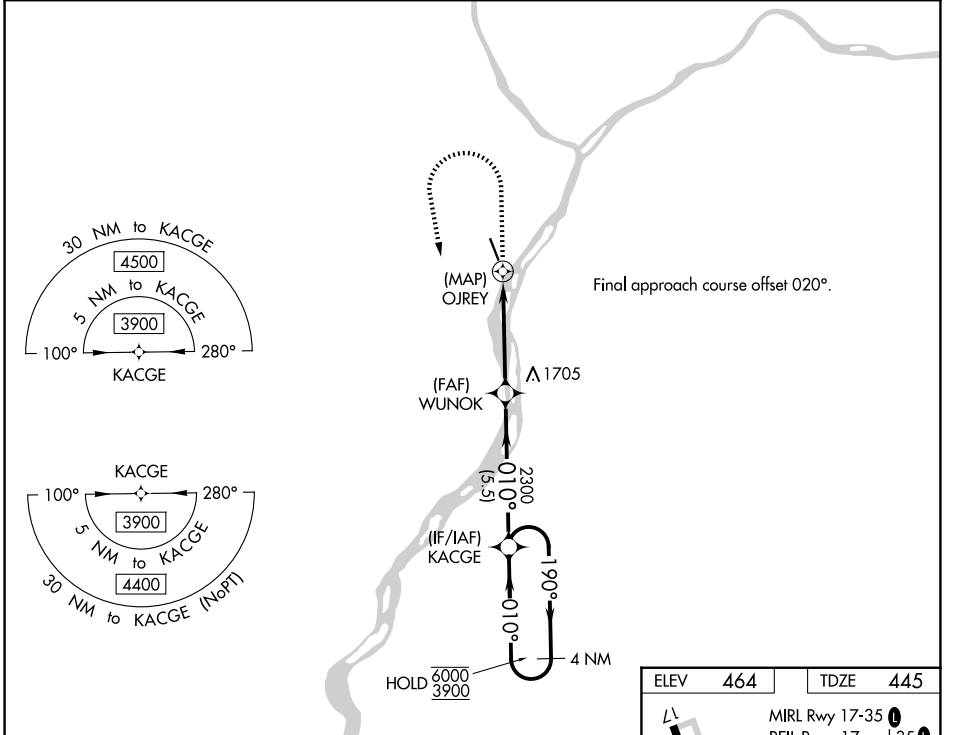
WAAS CH 49139 W35A	APP CRS 010°	Rwy Ldg TDZE Apt Elev	4510 445 464
---------------------------------	------------------------	-----------------------------	---

RNAV (GPS) RWY 35

PENN VALLEY (SE/G)

RNP APCH - GPS.		MISSED APPROACH: Climb to 2000 then climbing left turn to 3900 direct KACGE and hold.
Rwy 35 helicopter visibility reduction below 1 SM NA. Circling Rwy 17 NA at night. Straight-in Rwy 35 at night, operational VGSI required, remain on or above VGSI glidepath until threshold.		
-13°C		

ASOS 123.975	HARRISBURG APP CON 118.25 269.45	UNICOM 122.7 (CTAF) 0
------------------------	--	---------------------------------



CATEGORY	A	B	C	D
LP MDA	1200-1 755 (800-1)	1200-1¼ 755 (800-1¼)	1200-2	755 (800-2)
LNAV MDA	1860-1¼ 1415 (1400-1¼)	1860-1½ 1415 (1400-1½)	1860-3	1415 (1400-3)
CIRCLING	1860-1¼ 1396 (1400-1¼)	1860-1½ 1396 (1400-1½)	1860-3	1396 (1400-3)

NE-4, 14 MAY 2026 to 11 JUN 2026

NE-4, 14 MAY 2026 to 11 JUN 2026