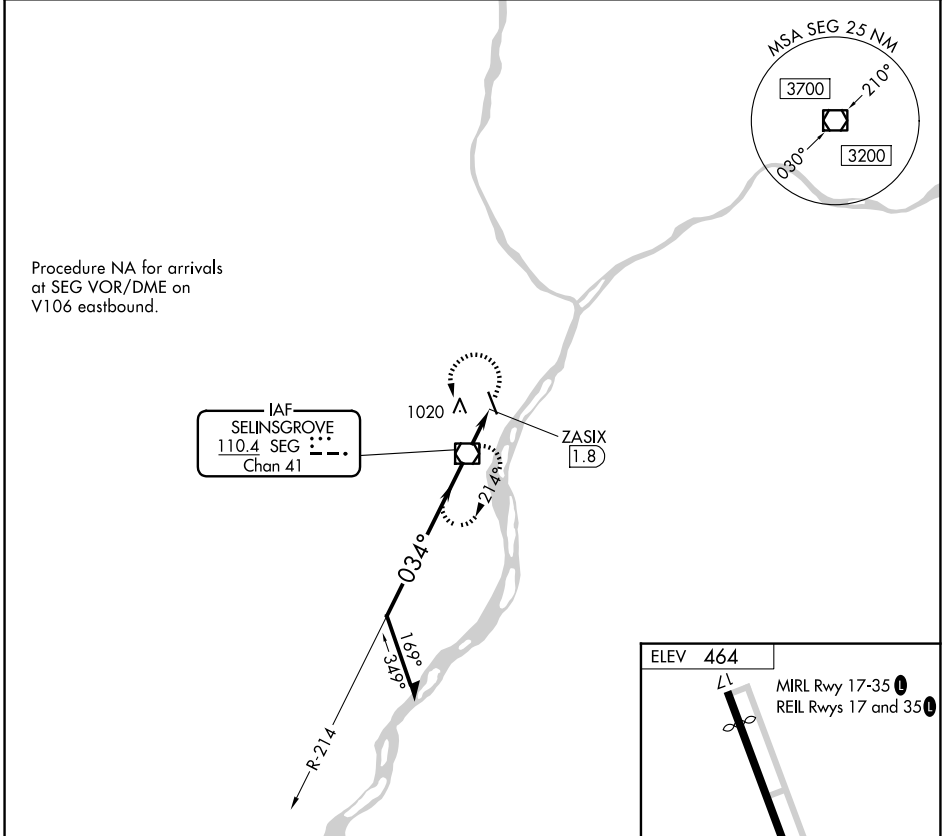


VOR/DME SEG <b>110.4</b> Chan <b>41</b>	APP CRS <b>034°</b>	Rwy Ldg TDZE Apt Elev <b>N/A</b> <b>N/A</b> <b>464</b>
---	------------------------	---

**VOR-A**  
PENN VALLEY (SEG)

<p><b>⚠</b> Circling to Rwy 17 NA at night. When Circling to Rwy 35 at night, operational VGSI required, remain on or above VGSI glidepath until threshold.</p> <p><b>❄</b> -13°C</p>	<p>MISSED APPROACH: Climbing left turn to 3400 direct SEG VOR/DME and hold, continue climb-in-hold to 3400.</p>
---	---

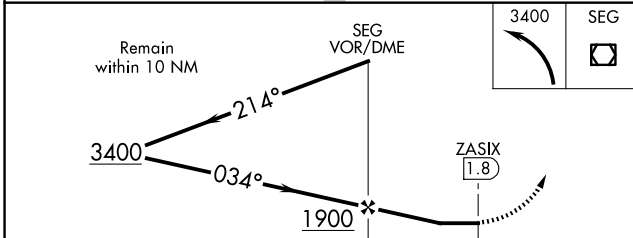
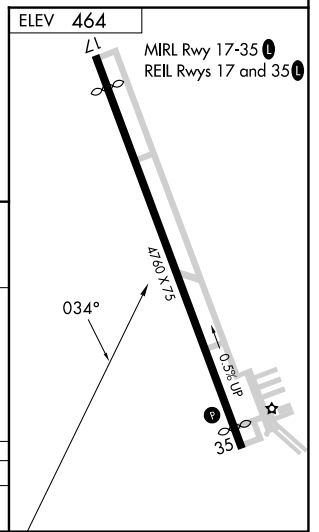
ASOS <b>123.975</b>	HARRISBURG APP CON <b>118.25 269.45</b>	UNICOM <b>122.7 (CTAF) 0</b>
------------------------	--	---------------------------------



Procedure NA for arrivals at SEG VOR/DME on V106 eastbound.

NE-4, 14 MAY 2026 to 11 JUN 2026

NE-4, 14 MAY 2026 to 11 JUN 2026



CATEGORY	A	B	C	D
CIRCLING	1400-1¼	936 (1000-1¼)	NA	