

SINTON, TEXAS

AL-5274 (FAA)

25219

APP CRS	Rwy Ldg	4073
140°	TDZE	48
	Apt Elev	48

RNAV (GPS) RWY 14

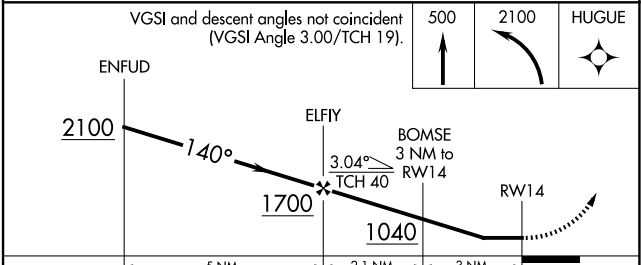
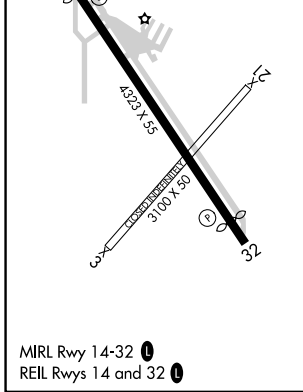
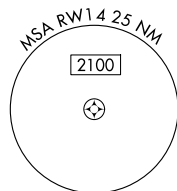
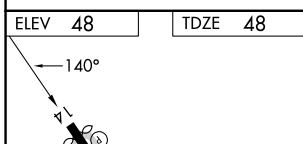
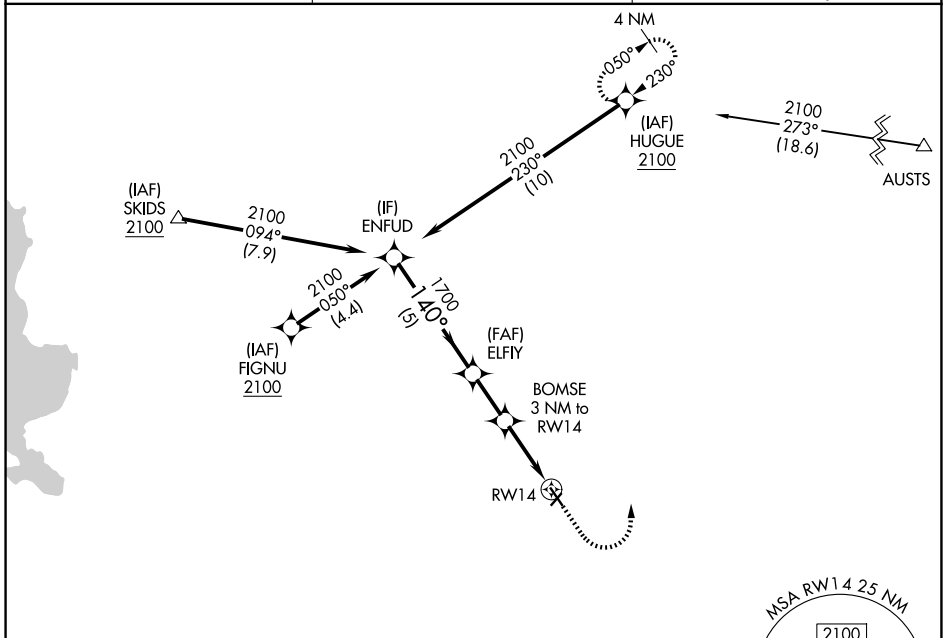
SINTON (T69)

RNP APCH - GPS.

▼ Rwy 14 helicopter visibility reduction below 1 SM NA.
▲ Procedure NA at night.

MISSED APPROACH: Climb to 500 then climbing left turn to 2100 direct HUGUE and hold.

AWOS-3 118.25	CORPUS APP CON 120.9 348.725	UNICOM 122.8 (CTAF) 0
-------------------------	--	---------------------------------



CATEGORY	A	B	C	D
LNAV MDA	420-1	372 (400-1)	NA	
CIRCLING	620-1	720-1	NA	
	572 (600-1)	672 (700-1)		

SINTON, TEXAS
Amdt 1 07AUG25

28°02'N-97°33'W

RNAV (GPS) RWY 14

SC-3, 14 MAY 2026 to 11 JUN 2026

SC-3, 14 MAY 2026 to 11 JUN 2026