

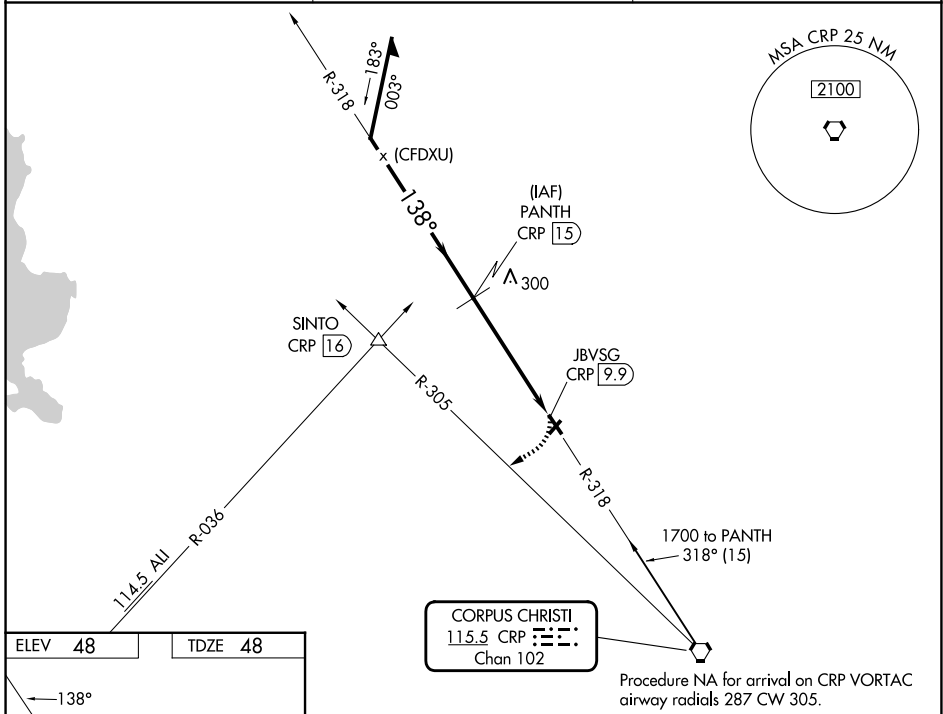
VORTAC CRP 115.5	APP CRS 138°	Rwy Ldg TDZE Apt Elev	4073 48 48
----------------------------	------------------------	-----------------------------	---------------------------------------

VOR RWY 14

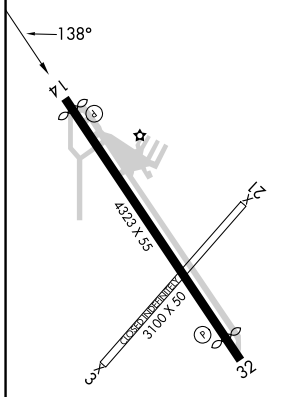
SINTON (T69)

DME required.	MISSED APPROACH: Climbing right turn to 1800 on heading 230° and CRP VORTAC R-305 to SINTO INT/CRP 16 DME.
<p>Procedure NA at night.</p> <p>Rwy 14 helicopter visibility reduction below 1 SM NA.</p>	

AWOS-3 118.25	CORPUS APP CON 120.9 348.725	UNICOM 122.8 (CTAF) 0
-------------------------	--	--

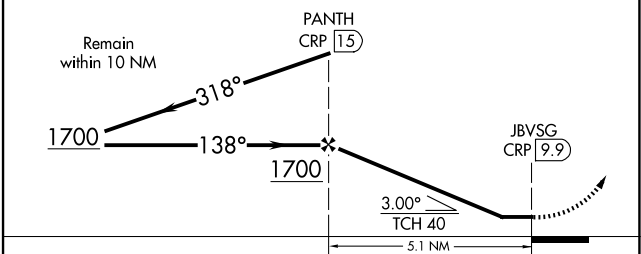


ELEV 48	TDZE 48
----------------	----------------



MIRL Rwy 14-32 0
REIL Rwy 14 and 32 0

VGSI and descent angles not coincident (VGSI Angle 3.00°/TCH 19).	1800 hdg 230°	CRP R-305	SINTO △
---	---------------------	--------------	------------



CATEGORY	A	B	C	D
S-14	640-1	592 (600-1)		NA
CIRCLING	640-1 592 (600-1)	720-1 672 (700-1)		NA

SC-3, 14 MAY 2026 to 11 JUN 2026

SC-3, 14 MAY 2026 to 11 JUN 2026