

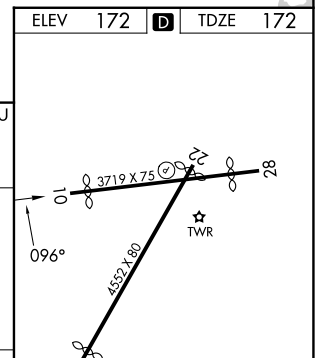
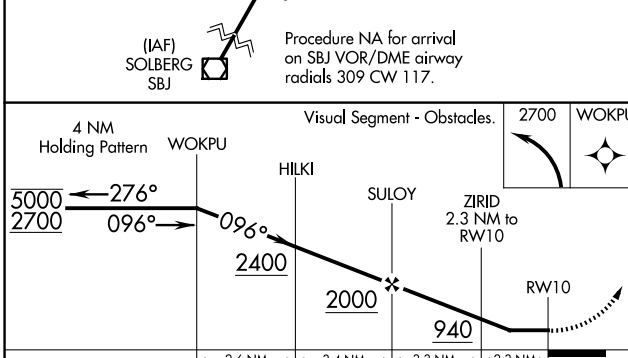
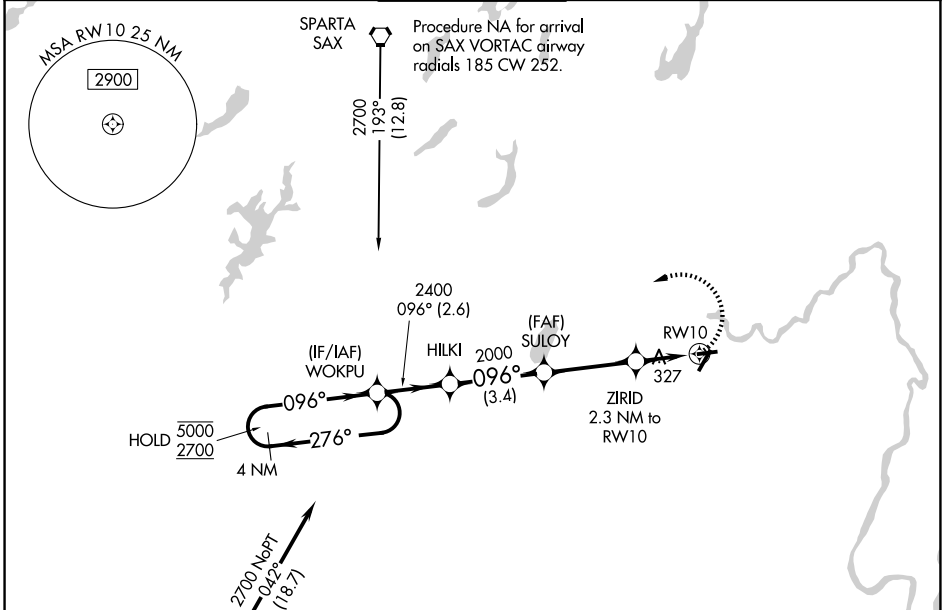
WAAS CH <b>81922</b> <b>W10A</b>	APP CRS <b>096°</b>	Rwy Ldg TDZE Apt Elev	<b>2822</b> <b>172</b> <b>172</b>
--	------------------------	-----------------------------	---

# RNAV (GPS) RWY 10

ESSEX COUNTY (CDW)

RNP APCH.		MISSED APPROACH: Climbing left turn to 2700 direct WOKPU and hold.		
<b>▽</b>	Procedure NA at night.			
<b>▲</b>	Rwy 10 helicopter visibility reduction below 1 SM NA.			

ATIS <b>135.5</b>	NEWARK APP CON <b>127.6 379.9</b>	CALDWELL TOWER * <b>119.8 (CTAF) 0</b>	GND CON <b>121.9</b>	UNICOM <b>122.95</b>
----------------------	--------------------------------------	---	-------------------------	-------------------------



CATEGORY	A	B	C	D
LP MDA	600-1	428 (500-1)	600-1¼	428 (500-1¼)
LNAV MDA	740-1	568 (600-1)	740-1½	568 (600-1½)
CIRCLING	960-1 788 (800-1)	1040-1¼ 868 (900-1¼)	1100-2¾ 928 (1000-2¾)	1400-3 1228 (1300-3)

ELEV 172	<b>D</b>	TDZE 172
----------	----------	----------

REIL Rwy 22 0  
MIRL Rwy 10-28 0  
HIRL Rwy 4-22 0

NE-2, 14 MAY 2026 to 11 JUN 2026

NE-2, 14 MAY 2026 to 11 JUN 2026