

WAAS CH <b>58039</b> <b>W11A</b>	APP CRS <b>106°</b>	Rwy Idg <b>5502</b> TDZE <b>1400</b> Apt Elev <b>1419</b>
----------------------------------------	------------------------	-----------------------------------------------------------------

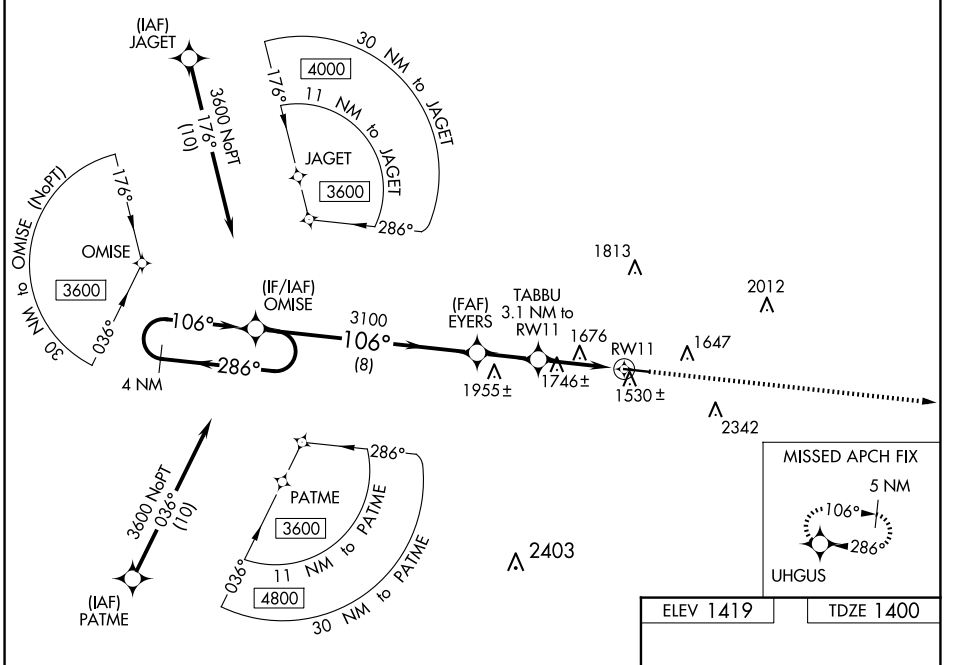
# RNAV (GPS) RWY 11

INDIANA COUNTY/JIMMY STEWART FLD (IDI)

**⚠** For uncompensated Baro-VNAV systems, LNAV/VNAV NA below -17°C (2°F) or above 54°C (130°F).  
**⚠** Baro-VNAV and VDP NA when using Allegheny County altimeter setting. DME/DME RNP-0.3 NA. Rwy 11 helicopter visibility reduction below ¾ SM NA. When local altimeter setting not received, use Allegheny County altimeter setting and increase LPV DA to 2026 feet and LNAV/VNAV DA to 2156 feet; increase visibility LPV all Cats to 2 ½ SM and LNAV/VNAV all Cats to 3 SM. Increase all MDA 120 feet and all Cat A and B visibility to 1 ¼ SM and LNAV Cat C and D visibility to 2 ½ SM.

**MISSED APPROACH:**  
Climb to 4800 direct UHGUS and hold.

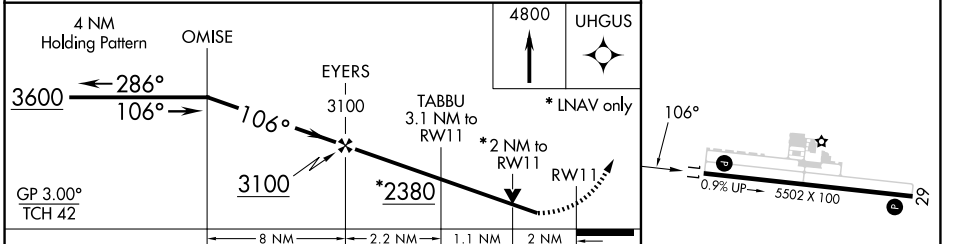
AWOS-3 <b>126.625</b>	JOHNSTOWN APP CON * <b>121.2 299.2</b>	UNICOM <b>122.8 (CTAF) 0</b>
--------------------------	-------------------------------------------	---------------------------------



NE-4, 14 MAY 2026 to 11 JUN 2026

NE-4, 14 MAY 2026 to 11 JUN 2026

ELEV 1419	TDZE 1400
-----------	-----------



CATEGORY	A	B	C	D
LPV DA	1907-1¾		507 (500-1¾)	
LNAV/VNAV DA	2037-2½		637 (700-2½)	
LNAV MDA	2060-1	660 (700-1)	2060-1⅞	660 (700-1⅞)
<b>C</b> CIRCLING	2120-1 701 (800-1)	2180-1 761 (800-1)	2660-3	1241 (1300-3)

\*LNAV only

\*2 NM to RW11

RW11

0.9% UP → 5502 X 100

REIL Rwy 11 0  
HIRL Rwy 11-29 0