

WAAS CH 58130 W10A	APP CRS 099°	Rwy Ldg TDZE 1892 Apt Elev 1892	3597
--	------------------------	---	-------------

RNAV (GPS) RWY 10

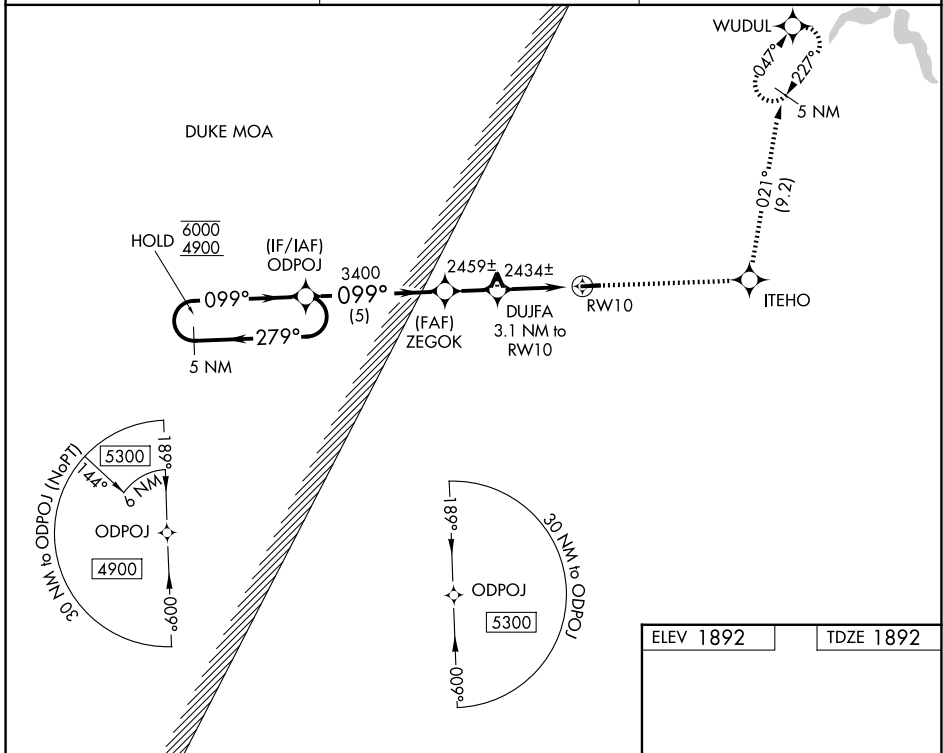
GRAND CANYON RGNL (N38)

RNP APCH - GPS.

⚠ Procedure NA at night. Rwy 10 helicopter visibility reduction below 1 SM NA.
⚠ When local altimeter setting not received, use ELZ altimeter setting and increase all MDAs 120 feet and visibility Cats A/B ¼ SM and visibility Cat C ½ SM.

MISSED APPROACH: Climb to 4500 direct ITEHO and on track 021° to WUDUL and hold.

AWOS-3PT 120.925	ELMIRA APP CON ★ 128.425 257.8	UNICOM 122.8 (CTAF) 0
----------------------------	--	---------------------------------



NE-4, 14 MAY 2026 to 11 JUN 2026

NE-4, 14 MAY 2026 to 11 JUN 2026

5 NM Holding Pattern		4500 ITEHO	WUDUL	
		↑	tr 021°	
		ITEHO	WUDUL	
CATEGORY	A	B	C	D
LP MDA	2760-1 868 (900-1)	2760-1¼ 868 (900-1¼)	2760-2½ 868 (900-2½)	NA
LNAV MDA	2760-1 868 (900-1)	2760-1¼ 868 (900-1¼)	2760-2½ 868 (900-2½)	NA
MIRL Rwy 10-28 0 REIL Rwy 28 0				