

WARSAW, INDIANA

AL-5282 (FAA)

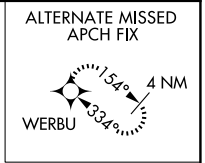
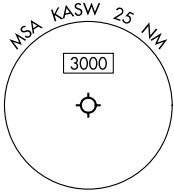
25331

|   |                        |   |
|---|------------------------|---|
| LOC/DME I-ASW<br><b>111.55</b><br>Chan <b>52(Y)</b> | APP CRS<br><b>272°</b> | Rwy Ldg <b>5100</b><br>TDZE <b>847</b><br>Apt Elev <b>850</b> |
|---|------------------------|---|

# ILS or LOC RWY 27

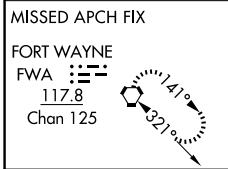
WARSAW MUNI (ASW)

|                                     |  |  |                                 |
|-------------------------------------|--|--|---------------------------------|
| DME required.                       |  | MISSED APPROACH: Climb to 1300 then climbing left turn to 4000 direct FWA VORTAC and hold. |                                 |
| NA Circling Rwy 18, 36 NA at night. |  | CINC DEL<br><b>134.05</b>  | UNICOM<br><b>122.7 (CTAF) 0</b> |
| AWOS-3<br><b>121.125</b>            | FORT WAYNE APP CON<br><b>127.2 284.6</b> |  |                                 |

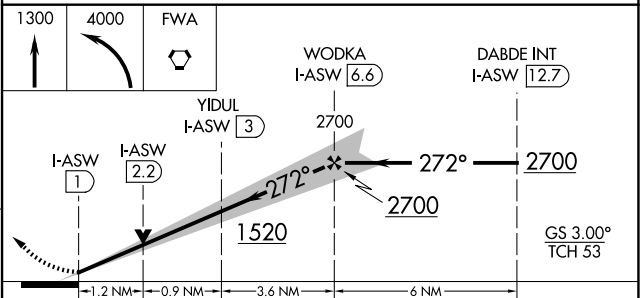
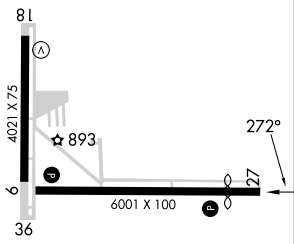


LOCALIZER 111.55  
I-ASW  
Chan 52 (Y)

(IF)  
DABDE INT I-ASW 12.7  
FWA 24.9



ELEV 850 **D** TDZE 847



| CATEGORY | A                      | B           | C                             | D                     |
|----------|------------------------|-------------|-------------------------------|-----------------------|
| S-ILS 27 | 1047-3/4 200 (200-3/4) |             |                               |                       |
| S-LOC 27 | 1280-1                 | 433 (500-1) | 1280-1 1/4                    | 433 (500-1 1/4)       |
| CIRCLING | 1340-1                 | 490 (500-1) | 1480-1 3/4<br>630 (700-1 3/4) | 1480-2<br>630 (700-2) |

HIRL Rwy 9-27 **0**  
MIRL Rwy 18-36 **0**  
REIL Rwy 9 and 27 **0**

WARSAW, INDIANA  
Amdt 2 07OCT21

41°16'N-85°50'W

# WARSAW MUNI (ASW) ILS or LOC RWY 27

EC-2, 14 MAY 2026 to 11 JUN 2026

EC-2, 14 MAY 2026 to 11 JUN 2026