

RNAV (GPS) RWY 9

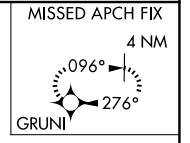
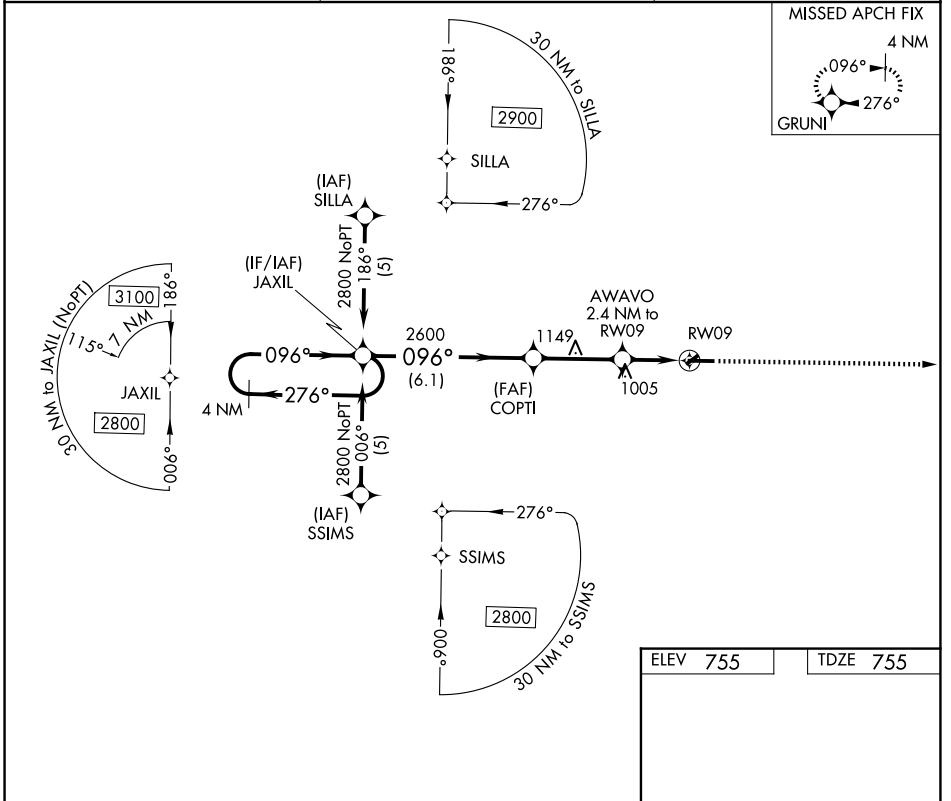
MOUNT PLEASANT MUNI (MOP)

APP CRS	Rwy Ldg	5000
096°	TDZE	755
	Apt Elev	755

⚠ DME/DME RNP-0.3 NA. When local altimeter setting not received use Alma altimeter setting and increase all MDA 60 feet, increase LNAV Cat C/D and Circling Cat C visibility ¼ mile. Circling NA to Rwy 5 and 23. Rwy 9 helicopter visibility reduction below ¾ SM NA.

MISSED APPROACH: Climb to 2800 direct GRUNI and hold.

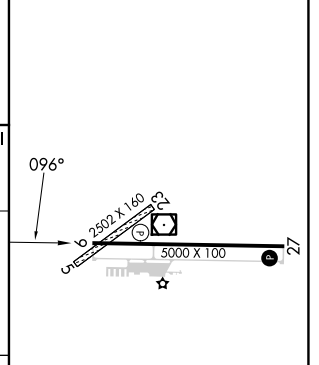
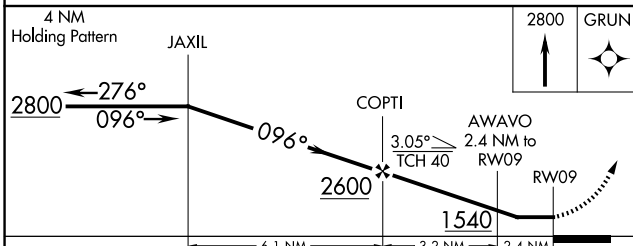
AWOS-3P 133.025	GREAT LAKES APP CON* 126.45 235.625	UNICOM 123.0 (CTAF) 0
---------------------------	---	---------------------------------



EC-1, 14 MAY 2026 to 11 JUN 2026

EC-1, 14 MAY 2026 to 11 JUN 2026

ELEV 755	TDZE 755
----------	----------



CATEGORY	A	B	C	D
LNAV MDA	1320-1	565 (600-1)	1320-1½ 565 (600-1½)	1320-1¾ 565 (600-1¾)
CIRCLING	1320-1	565 (600-1)	1400-1¾ 645 (700-1¾)	1700-3 945 (1000-3)

REIL Rwy 9 and 27
MIRL Rwy 9-27