

PTOMC TWO DEPARTURE (RNAV)

NE-3, 14 MAY 2026 to 11 JUN 2026

DEPARTURE ROUTE DESCRIPTION

TAKEOFF RUNWAY 17: Climb heading 171° to 900, then climbing right turn direct to cross PTOMC at 3000, do not exceed 210K until PTOMC, thence . . .

TAKEOFF RUNWAY 35: Climb heading 351° to 900, then climbing left turn direct to cross PTOMC at 3000, do not exceed 210K until PTOMC, thence . . .

. . . on heading 310°, maintain 3000, expect radar vectors on course. Expect filed altitude within ten (10) minutes after departure.

WESTMINSTER
EMI

NOTE: DME/DME/IRU or GPS required.
NOTE: RNAV 1.
NOTE: RADAR required.

BALTIMORE
BAL

SWANN
SWANN

BROSS
BROSS

PALEO
PALEO

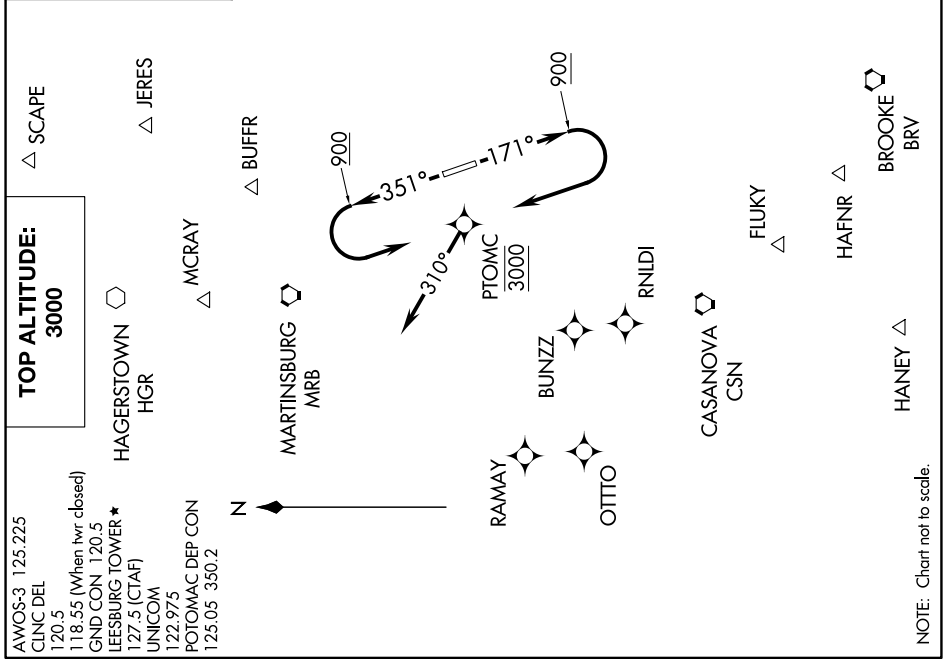
AGARD
AGARD

WOOLY
WOOLY

TAKEOFF MINIMUMS:

Rwy 17: Standard with minimum climb of 500' per NM to 900. Then 327' per NM to 3000.

Rwy 35: Standard with minimum climb of 500' per NM to 900. Then 370' per NM to 3000.



PTOMC TWO DEPARTURE (RNAV)

NE-3, 14 MAY 2026 to 11 JUN 2026