

SCRAM SIX DEPARTURE (RNAV)

TOP ALTITUDE:
3000



NOTE: Chart not to scale.

DEPARTURE ROUTE DESCRIPTION

Climb on heading assigned by ATC, expect RADAR vectors to POOCH, then on track 240° to SCRAM, thence. . . .

. . . . as depicted. Maintain 3000, expect clearance to filed altitude within ten (10) minutes after departure.

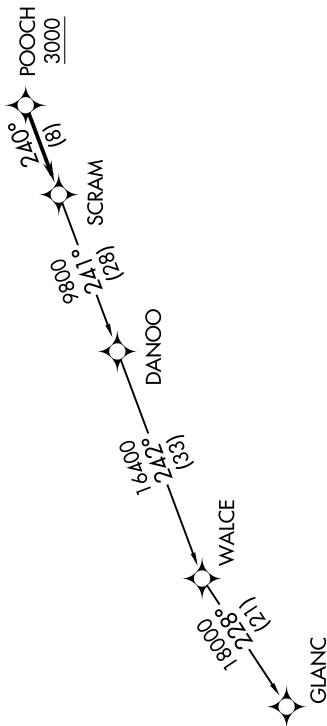
GLANC TRANSITION [SCRAM6.GLANC]:

NE-3, 14 MAY 2026 to 11 JUN 2026

AWOS-3
125.225
CLNC DEL
120.5
118.55 (When twr closed)
GND CON
120.5
LEESBURG TOWER ★
127.5 (CTAF)
UNICOM
122.975
POTOMAC DEP CON
125.05 350.2

NOTE: RNAV 1.
NOTE: RADAR required.
NOTE: DME/DME/IRU or GPS required.
NOTE: Turbo-jets only.
NOTE: Takeoff Rwy 35 requires a climb to 1200 on heading 353° before proceeding on the ATC assigned heading for obstacle avoidance.

TAKEOFF MINIMUMS:
Rwys 17, 35: Standard



SCRAM SIX DEPARTURE (RNAV)

(SCRAM6.SCRAM) 31DEC20

NE-3, 14 MAY 2026 to 11 JUN 2026