

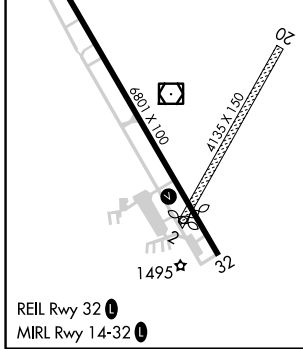
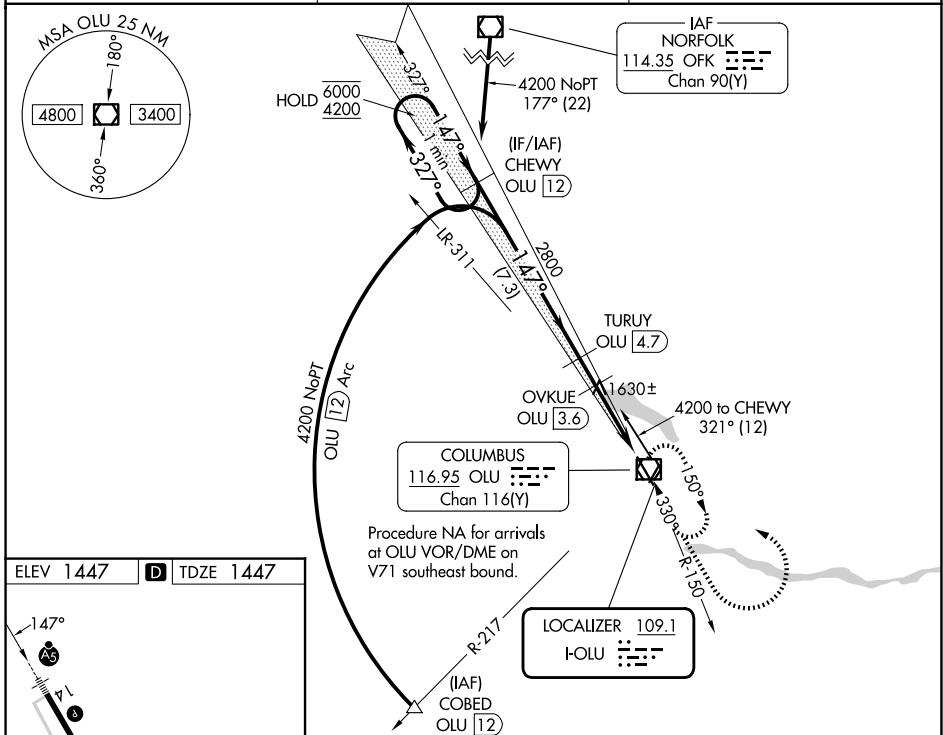
LOC I-OLU <b>109.1</b>	APP CRS <b>147°</b>	Rwy Ldg TDZE Apt Elev	<b>6260</b> <b>1447</b> <b>1447</b>
---------------------------	------------------------	-----------------------------	---

# LOC RWY 14

COLUMBUS MUNI (OLU)

DME required.	MALSR	MISSED APPROACH: Climb to 3500 then climbing left turn to 4000 direct OLU VOR/DME and hold.
Circling NA to Rws 2 and 20. Rwy 14 helicopter visibility reduction below 3/4 SM NA. VDP NA when using OFK altimeter setting. When local altimeter setting not received, use OFK altimeter setting and increase all MDAs 100 feet, S-14 Cat C and D visibility 1/2 SM and Circling Cat C and D visibility 1/2 SM. For inop ALS, increase S-14 Cats A and B visibility to 1 SM and Cats C and D visibility to 1 1/8 SM. For inop ALS when using OFK altimeter setting, increase S-14 Cats A and B visibility to 1 SM and Cats C and D visibility to 1 1/8 SM.		

AWOS-3PT <b>125.525</b>	MINNEAPOLIS CENTER <b>128.75 346.3</b>	UNICOM <b>123.05 (CTAF) 0</b>
----------------------------	---	----------------------------------



One Minute Holding Pattern 6000 ← 327° 4200 → 147°	CHEWY OLU 12	TURUY OLU 4.7	OVKJUE OLU 3.6	3500	4000	OLU
	2800	2440	3.00 TCH 40	OLU 2	OLU 0.6	
	7.3 NM	1.1 NM	1.6 NM	1.4 NM		
CATEGORY	A	B	C	D		
S-14	1920-3/4	473 (500-3/4)	1920-1	473 (500-1)		
CIRCLING	2000-1	553 (600-1)	2100-1 3/4	2100-2	653 (700-1 3/4)	653 (700-2)

NC-2, 14 MAY 2026 to 11 JUN 2026

NC-2, 14 MAY 2026 to 11 JUN 2026