

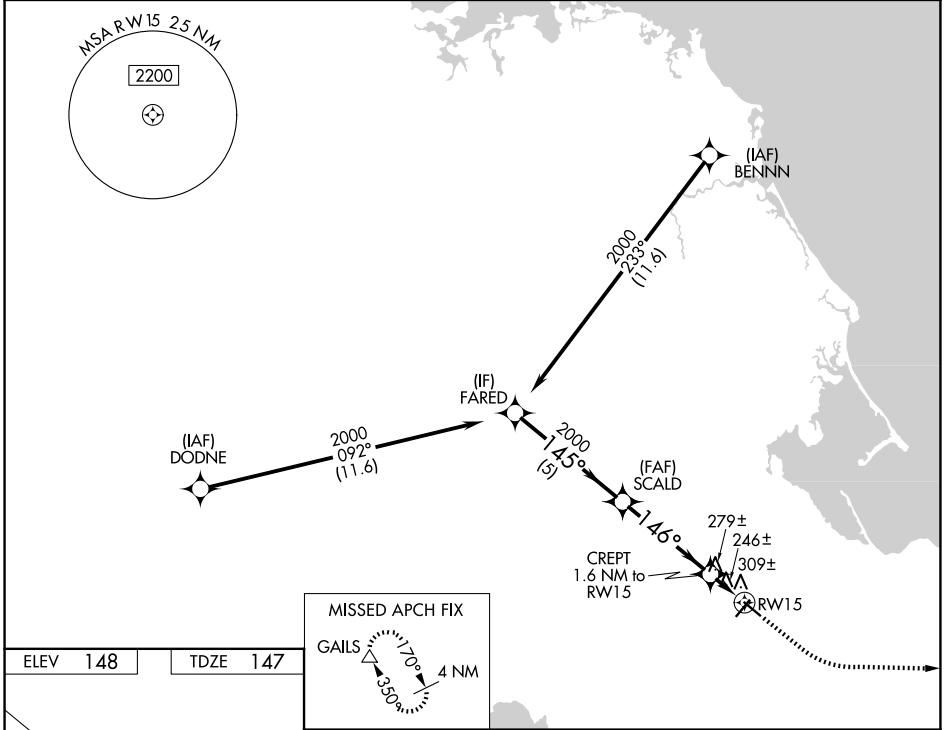
WAAS CH <b>93639</b>	APP CRS <b>146°</b>	Rwy Ldg TDZE <b>147</b> Apt Elev <b>148</b>
-------------------------	------------------------	---

# RNAV (GPS) RWY 15

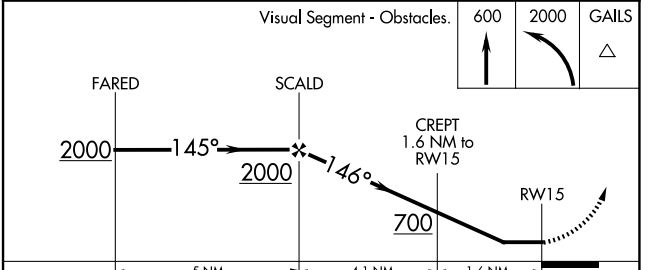
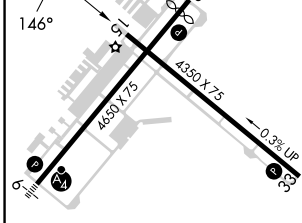
PLYMOUTH MUNI (PYM)

RNP APCH - GPS.	MISSED APPROACH: Climb to 600 then climbing left turn to 2000 direct GAILS and hold.
<p>▼ Rwy 15 helicopter visibility reduction below 1 SM NA.</p> <p>▲ Straight-in Rwy 15 NA at night, Circling Rwy 15 NA at night.</p>	

ASOS <b>135.625</b>	BOSTON APP CON <b>118.2 284.6</b>	CLNC DEL <b>127.75</b>	UNICOM <b>122.725 (CTAF)</b>	<b>122.9</b>
------------------------	--------------------------------------	---------------------------	---------------------------------	--------------



ELEV <b>148</b>	TDZE <b>147</b>
-----------------	-----------------



	5 NM		4.1 NM		1.6 NM		
CATEGORY	A	B	C	D			
LP MDA	500-1 353 (400-1)			NA			
LNAV MDA	560-1	413 (500-1)	560-1 1/8 413 (500-1 1/8)		NA		
CIRCLING	620-1 472 (500-1)	640-1 492 (500-1)	760-1 3/4 612 (700-1 3/4)		NA		

REIL Rwy 24   
MIRL Rwy 6-24 and 15-33

NE-1, 14 MAY 2026 to 11 JUN 2026

NE-1, 14 MAY 2026 to 11 JUN 2026