

WAAS CH <b>63241</b> <b>W33A</b>	APP CRS <b>326°</b>	Rwy Ldg TDZE Apt Elev	<b>4350</b> <b>142</b> <b>148</b>
--	------------------------	-----------------------------	---

# RNAV (GPS) RWY 33

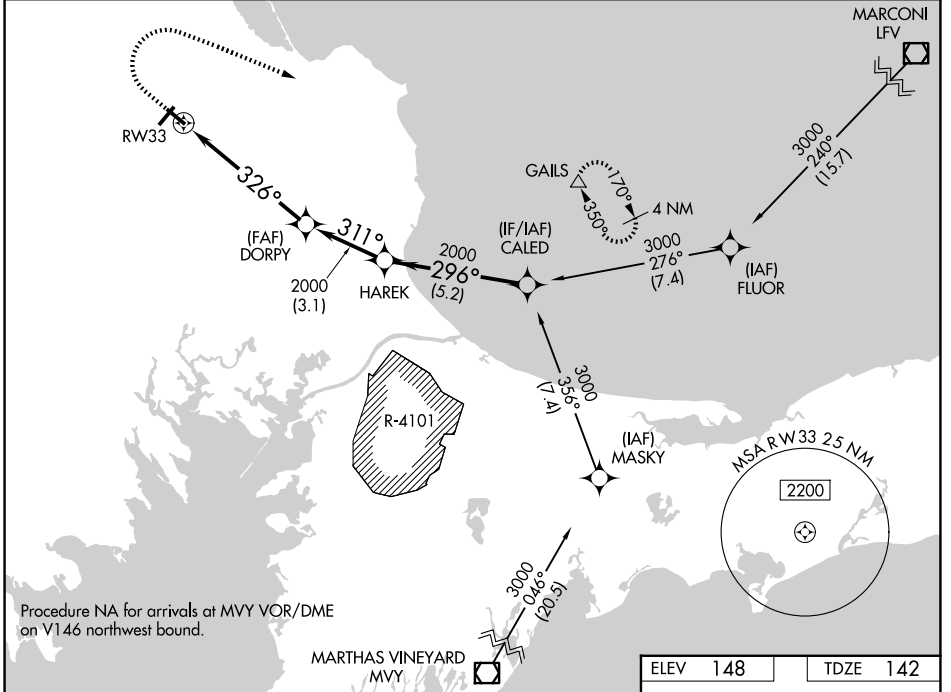
PLYMOUTH MUNI (PYM)

RNP APCH - GPS.

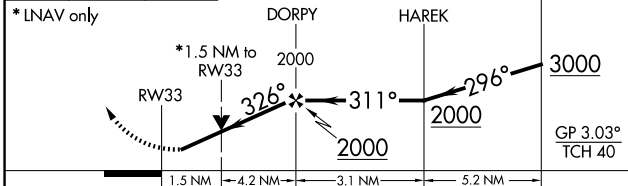
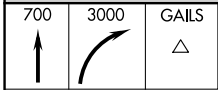
- ⚠ Circling Rwy 15 NA at night. Rwy 33 helicopter visibility reduction below 3/4 SM NA.
- ⚠ For uncompensated Baro-VNAV systems, LNAV/VNAV NA below -18°C or above 54°C.

MISSED APPROACH: Climb to 700 then climbing right turn to 3000 direct GAILS and hold.

ASOS <b>135.625</b>	BOSTON APP CON <b>118.2 284.6</b>	CLINC DEL <b>127.75</b>	UNICOM <b>122.725 (CTAF)</b>	<b>122.9 0</b>
------------------------	--------------------------------------	----------------------------	---------------------------------	----------------



Procedure NA for arrivals at MVY VOR/DME on V146 northwest bound.



ELEV 148	TDZE 142
----------	----------

CATEGORY	A	B	C	D
LPV DA	393-3/4	251 (300-3/4)		NA
LNAV/VNAV DA	486-1	344 (400-1)		NA
LNAV MDA	660-1	518 (600-1)	660-1 3/8 518 (600-1 3/8)	NA
CIRCLING	660-1	512 (600-1)	760-1 3/4 612 (700-1 3/4)	NA

