

WAAS CH 78422 W34A	APP CRS 344°	Rwy Ldg TDZE 138 Apt Elev 141
--	------------------------	---

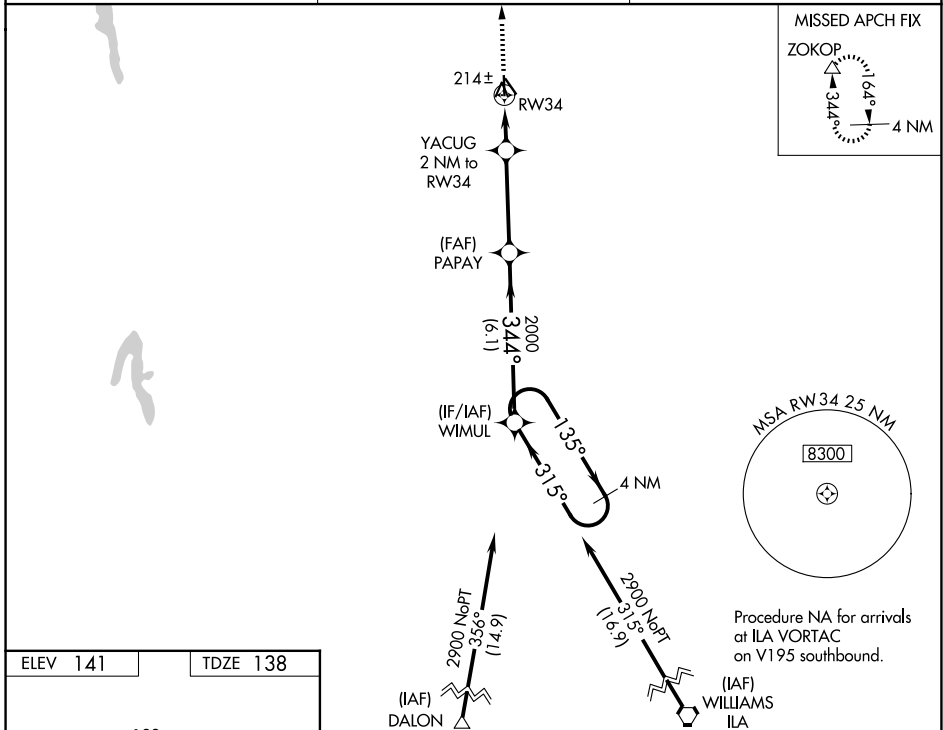
RNAV (GPS) RWY 34

WILLOWS/GLENN COUNTY (WLW)

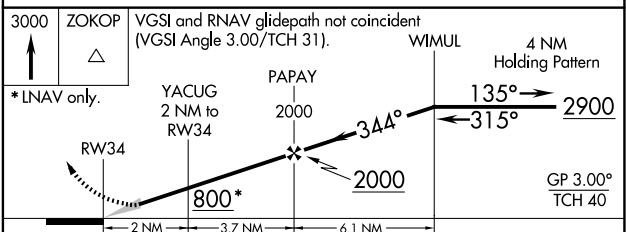
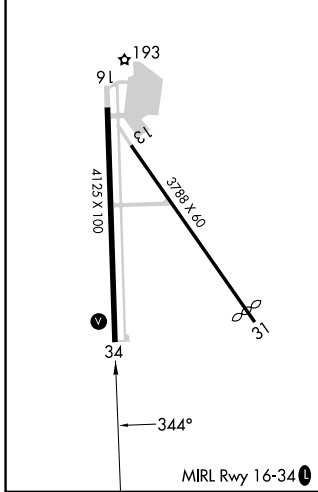
NA When Orville Muni altimeter setting not received, procedure NA.
Baro-VNAV NA. DME/DME RNP-0.3 NA. Use Orville altimeter setting.

MISSED APPROACH: Climb to 3000 direct ZOKOP and hold.

OVE ASOS 121.425	OAKLAND CENTER 132.2 350.3	UNICOM 122.8 (CTAF)
----------------------------	--------------------------------------	-------------------------------



ELEV 141	TDZE 138
----------	----------



CATEGORY	A	B	C	D
LPV DA	460-1½	322 (400-1½)		NA
LNAV/VNAV DA	460-1½	322 (400-1½)		NA
LNAV MDA	540-1	402 (400-1)	540-1½ 402 (400-1½)	NA
CIRCLING	680-1	539 (600-1)	680-1½ 539 (600-1½)	NA

SW-2, 14 MAY 2026 to 11 JUN 2026

SW-2, 14 MAY 2026 to 11 JUN 2026