

WAAS CH 62918 W01A	APP CRS 015°	Rwy Ldg TDZE Apt Elev	5705 1985 1985
--	------------------------	-----------------------------	---

RNAV (GPS) RWY 1

SIDNEY-RICHLAND RGNL (SDY)

RNP APCH - GPS.

⚠ For uncompensated Baro-VNAV systems, LNAV/VNAV NA below -20°C or above 54°C. Circling Rwy 11, 29 NA at night.

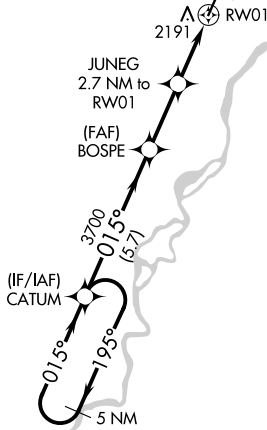
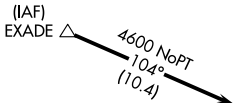
MISSED APPROACH: Climb to 4600 direct HAKET and hold.

AWOS-3PT
119.275

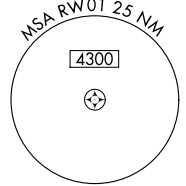
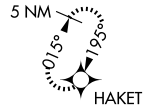
SALT LAKE CENTER
126.85 305.2

UNICOM
122.8 (CTAF) 0

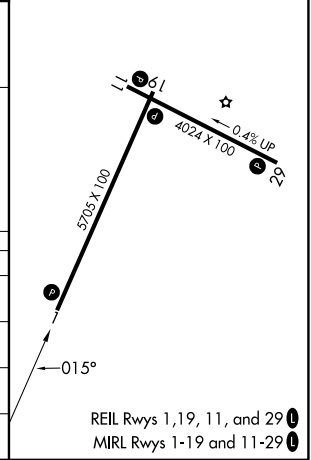
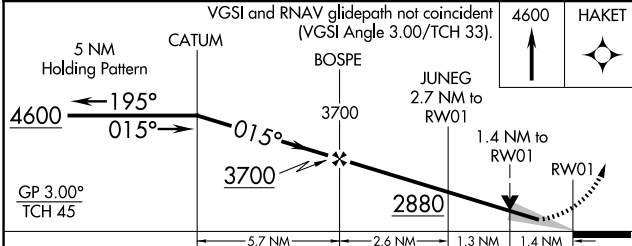
Procedure NA for arrivals at EXADE on V465 southwest bound.



MISSED APCH FIX



ELEV 1985 **D** TDZE 1985



CATEGORY	A	B	C	D
LPV DA		2238-7/8	253 (300-7/8)	
LNAV/VNAV DA		2419-1 1/2	434 (500-1 1/2)	
LNAV MDA	2460-1	475 (500-1)	2460-1 3/8	475 (500-1 3/8)
CIRCLING	2580-1 595 (600-1)	2660-1 675 (700-1)	2700-2 715 (800-2)	2840-2 3/4 855 (900-2 3/4)

REIL Rws 1, 19, 11, and 29 **0**
MIRL Rws 1-19 and 11-29 **0**