

WAAS CH 78314 W13A	APP CRS 131°	Rwy Ldg 6400 TDZE 1470 Apt Elev 1470
--	------------------------	---

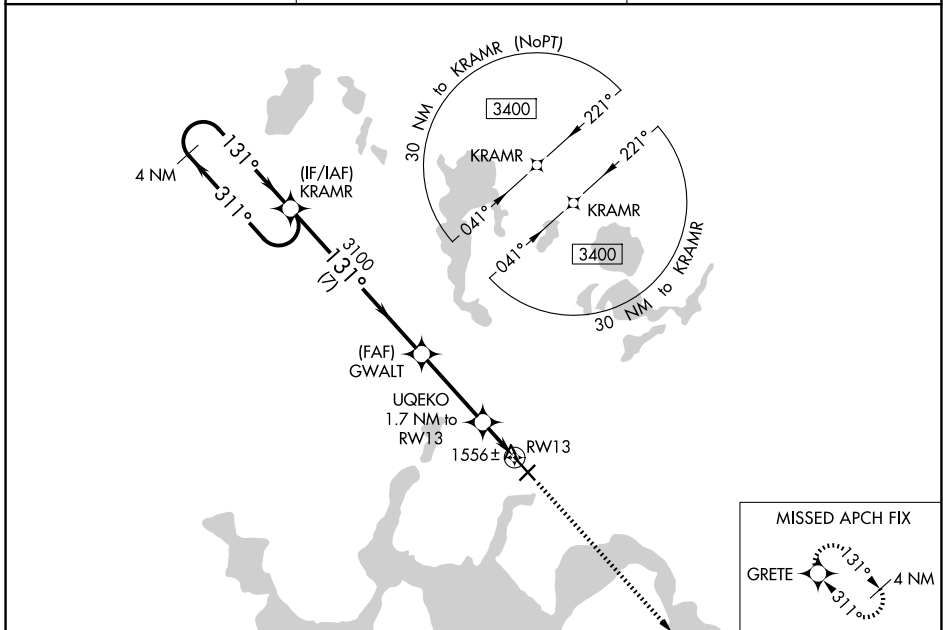
RNAV (GPS) RWY 13

DEVILS LAKE RGNL (DVL)

⚠ For uncompensated Baro-VNAV systems, LNAV/VNAV NA below -17°C (2°F) or above 54°C (130°F). DME/DME RNP-0.3 NA. Baro-VNAV and VDP NA when using Cando altimeter setting. When local altimeter setting not received, use Cando altimeter setting and increase all DA 63 feet and all MDA 80 feet, increase LPV and LNAV/VNAV all. Cats visibility ¼ mile, LNAV and Circling Cats C and D visibility ½ mile.

MISSED APPROACH: Climb to 3400 direct GRETE and hold.

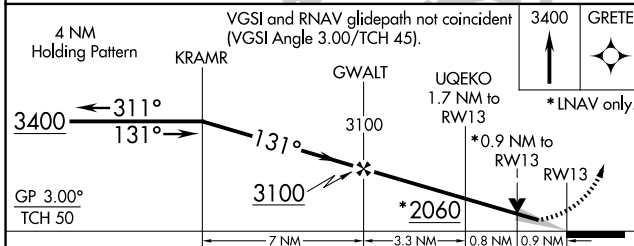
AWOS-3PT 125.875	MINNEAPOLIS CENTER 124.2 270.3	UNICOM 122.8 (CTAF)
----------------------------	--	-------------------------------



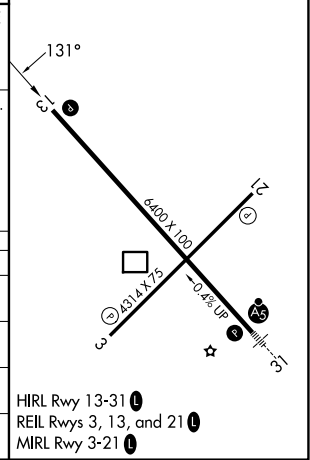
NC-1, 14 MAY 2026 to 11 JUN 2026

NC-1, 14 MAY 2026 to 11 JUN 2026

ELEV 1470	D	TDZE 1470
-----------	----------	-----------



CATEGORY	A	B	C	D
LPV DA		1720-3/4	250 (300-3/4)	
LNAV/VNAV DA		1791-1	321 (400-1)	
LNAV MDA		1820-1	350 (400-1)	
CIRCLING	2000-1	530 (600-1)	2240-2 1/4 770 (800-2 1/4)	2240-2 1/2 770 (800-2 1/2)



HIRL Rwy 13-31 **Ⓛ**
REIL Rws 3, 13, and 21 **Ⓛ**
MIRL Rwy 3-21 **Ⓛ**