

WAAS CH 78417 W21A	APP CRS 218°	Rwy Ldg TDZE Apt Elev	4314 1449 1469
--	------------------------	-----------------------------	---

RNAV (GPS) RWY 21

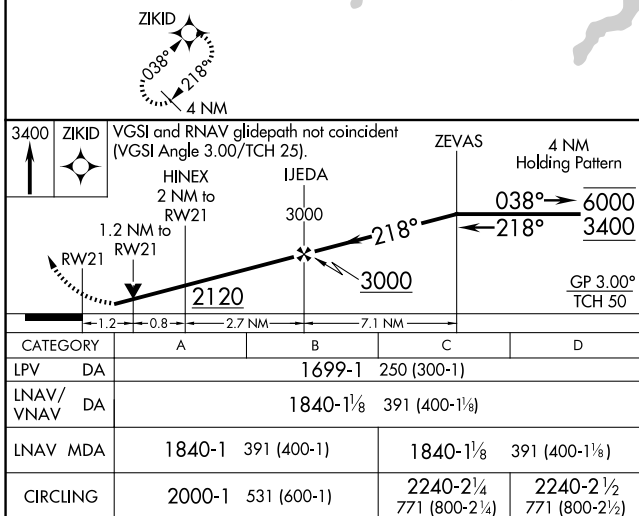
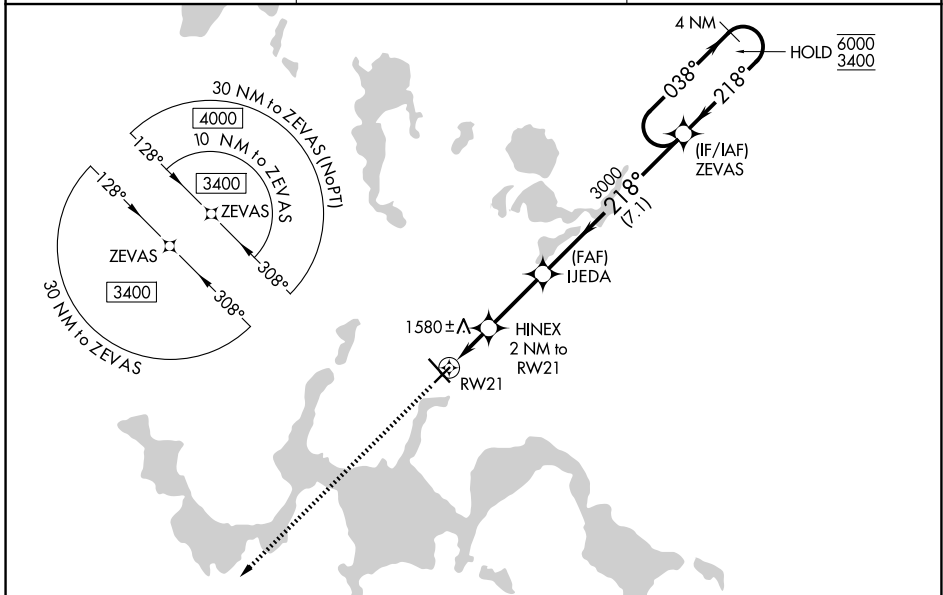
DEVILS LAKE RGNL (DVL)

RNP APCH - GPS.

⚠ For uncompensated Baro-VNAV systems, LNAV/VNAV NA below -17°C or above 54°C. Baro-VNAV and VDP NA when using 9D7 altimeter setting. Rwy 21 helicopter visibility reduction below 3/4 SM NA. When local altimeter setting not received, use 9D7 altimeter setting and increase LPV DA to 1760 feet; increase LNAV/VNAV DA to 1901 feet and all visibilities 1/4 SM. Increase all MDAs 80 feet and LNAV visibility Cat C/D 1/4 SM, and Circling visibility Cat C/D 1/4 SM.

MISSED APPROACH:
Climb to 3400 direct
ZIKID and hold.

AWOS-3PT 125.875	MINNEAPOLIS CENTER 124.2 270.3	UNICOM 122.8 (CTAF)
----------------------------	--	-------------------------------



ELEV 1469	TDZE 1449
-----------	-----------

3400	ZIKID	VGSI and RNAV glidepath not coincident (VGSI Angle 3.00/TCH 25).	ZEVAS	4 NM Holding Pattern
	HINEX 2 NM to RW21		IJEDA	
	1.2 NM to RW21		3000	
	0.8 NM to RW21		2120	
			3000	
				6000 3400
				GP 3.00° TCH 50

CATEGORY	A	B	C	D
LPV DA		1699-1	250 (300-1)	
LNAV/VNAV DA		1840-1 1/8	391 (400-1 1/8)	
LNAV MDA	1840-1	391 (400-1)	1840-1 1/8	391 (400-1 1/8)
CIRCLING	2000-1	531 (600-1)	2240-2 1/4 771 (800-2 1/4)	2240-2 1/2 771 (800-2 1/2)

HIRL Rwy 13-31
REIL Rwys 3, 13 and 21
MIRL Rwy 3-21

NC-1, 14 MAY 2026 to 11 JUN 2026

NC-1, 14 MAY 2026 to 11 JUN 2026