

WAAS CH <b>93608</b> <b>W03A</b>	APP CRS <b>038°</b>	Rwy Ldg TDZE Apt Elev	<b>4314</b> <b>1450</b> <b>1470</b>
--	------------------------	-----------------------------	---

# RNAV (GPS) RWY 3

DEVILS LAKE RGNL (DVL)

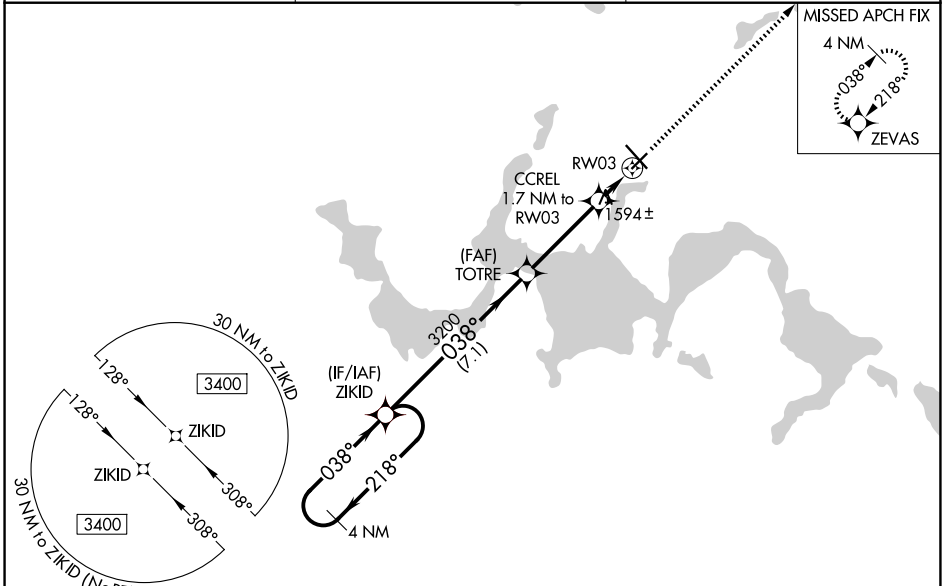
**⚠** For uncompensated Baro-VNAV systems, LNAV/VNAV NA below -17°C (2°F) or above 54°C (130°F). DME/DME RNP-0.3 NA. When local altimeter setting not received, use Cando altimeter setting and increase all DA 63 feet, and all MDA 80 feet, increase LNAV/VNAV all Cats visibility 1/8 mile, LNAV and Circling Cat C and D visibility 1/4 mile. Helicopter visibility reduction below 3/4 SM NA. Baro-VNAV NA when using Cando altimeter setting.

MISSED APPROACH: Climb to 3400 direct ZEVAS and hold.

AWOS-3PT  
**125.875**

MINNEAPOLIS CENTER  
**124.2 270.3**

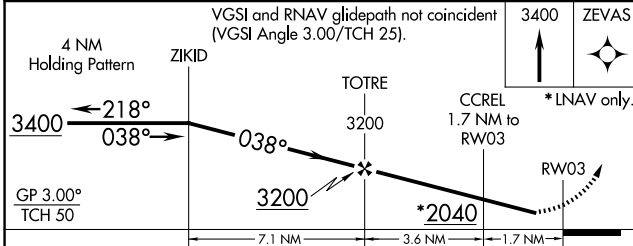
UNICOM  
**122.8 (CTAF)**



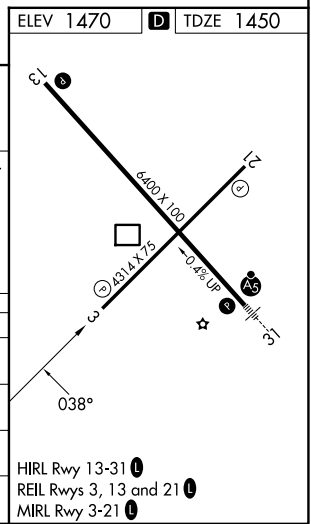
NC-1, 14 MAY 2026 to 11 JUN 2026

NC-1, 14 MAY 2026 to 11 JUN 2026

ELEV 1470 **D** TDZE 1450



CATEGORY	A	B	C	D
LPV DA		1700-1	250 (300-1)	
LNAV/VNAV DA		1714-1	264 (300-1)	
LNAV MDA	1860-1	410 (400-1)	1860-1 1/8	410 (400-1 1/8)
CIRCLING	2000-1	530 (600-1)	2240-2 1/4 770 (800-2 1/4)	2240-2 1/2 770 (800-2 1/2)



HIRL Rwy 13-31 **Ⓛ**  
REIL Rwy 3, 13 and 21 **Ⓛ**  
MIRL Rwy 3-21 **Ⓛ**