

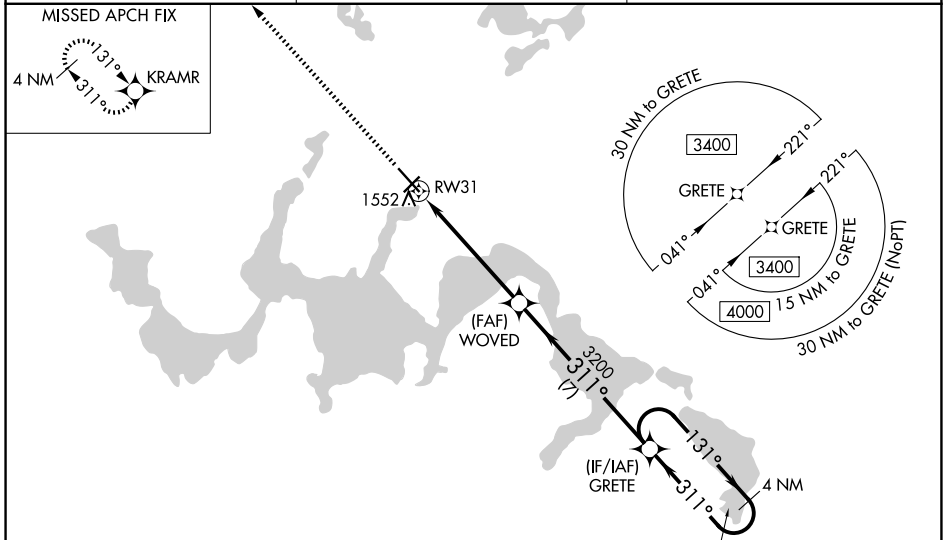
WAAS CH 58314 W31A	APP CRS 311°	Rwy Ldg 6400 TDZE 1450 Apt Elev 1469
--	------------------------	---

RNAV (GPS) RWY 31

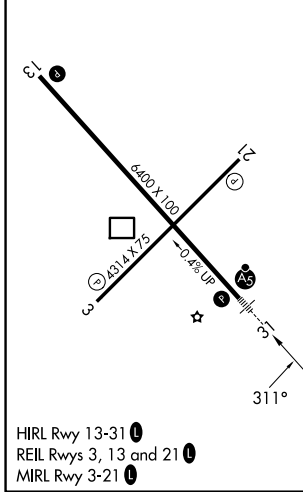
DEVILS LAKE RGNL (DVL)

RNP APCH - GPS.	MALSR	MISSED APPROACH: Climb to 3400 direct KRAMR and hold.
<p>⚠ For uncompensated Baro-VNAV systems, LNAV/VNAV NA below -17°C or above 54°C. Baro-VNAV and VDP NA when using Cando altimeter setting. For inop ALS, increase LNAV/VNAV all Cats visibility to 7/8 SM, LNAV Cats C/D visibility to 1 SM. When local altimeter setting not received, use Cando altimeter setting and increase LPV DA 1711 feet, LNAV/VNAV DA to 1782 feet; increase all MDAs 80 feet and LNAV visibility Cat C/D 1/4 SM, and Circling visibility Cat C/D 1/4 SM. For inop ALS when using Cando altimeter setting, increase LPV all Cats visibility to 7/8 SM.</p>		

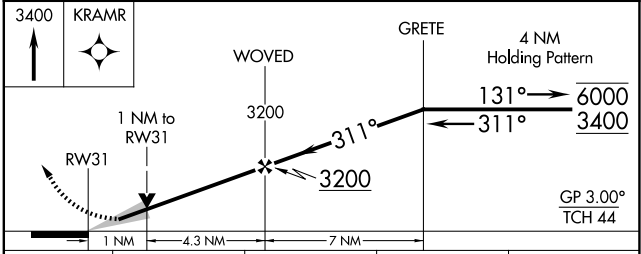
AWOS-3PT 125.875	MINNEAPOLIS CENTER 124.2 270.3	UNICOM 122.8 (CTAF) 0
----------------------------	--	---------------------------------



ELEV 1469	D	TDZE 1450
-----------	----------	-----------



HIRL Rwy 13-31 **0**
REIL Rwys 3, 13 and 21 **0**
MIRL Rwy 3-21 **0**



CATEGORY	A	B	C	D
LPV DA		1650-1/2	200 (200-1/2)	
LNAV/VNAV DA		1721-1/2	271 (300-1/2)	
LNAV MDA	1820-1/2	370 (400-1/2)	1820-5/8	370 (400-5/8)
CIRCLING	2000-1	531 (600-1)	2240-2 1/4 771 (800-2 1/4)	2240-2 1/2 771 (800-2 1/2)

NC-1, 14 MAY 2026 to 11 JUN 2026

NC-1, 14 MAY 2026 to 11 JUN 2026