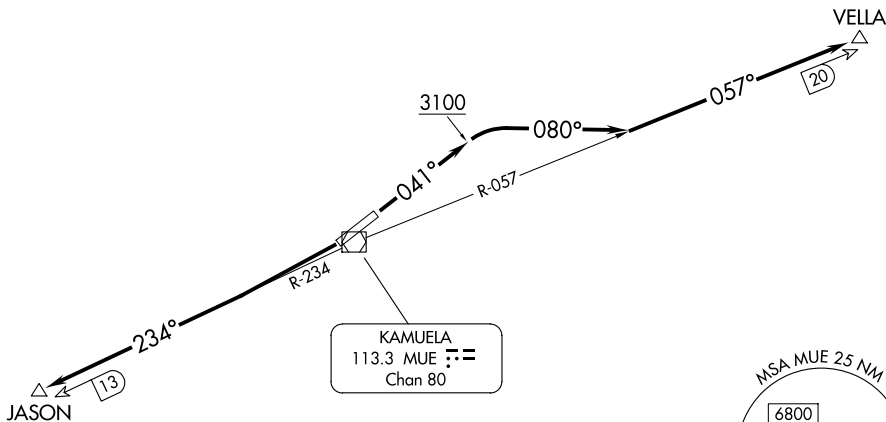


KAMUELA ONE DEPARTURE (OBSTACLE)

HCF CENTER
118.45 278.3
AWOS-3PT
120.0
CTAF
122.9



TAKEOFF MINIMUMS

Rwy 4: 400-2½ or standard with minimum climb of 240'/NM to 3100.
Rwy 22: Standard.

TAKEOFF OBSTACLE NOTES

- Rwy 4: Terrain 9' from DER, 215' right of centerline, 2675' MSL.
- Pole, fence beginning 158' from DER, 7' right of centerline, up to 26' AGL/2702' MSL.
- Terrain 1172' from DER, 161' left of centerline, 2701' MSL.
- Fence 2754' from DER, 322' right of centerline, 17' AGL/2741' MSL.
- Trees beginning 5201' from DER, 178' right of centerline, up to 2817' MSL.
- Tree 5332' from DER, 111' left of centerline, 2829' MSL.
- Trees 1.2 NM from DER, 738' left and right of centerline, up to 2889' MSL.
- Towers beginning 1.7 NM from DER, 1095' left of centerline, up to 138' AGL/2992' MSL.

NOTE: Chart not to scale

DEPARTURE ROUTE DESCRIPTION

TAKEOFF RUNWAY 4: Climb on heading 041° to 3100 then climbing right turn heading 080° and MUE VOR/DME R-057 to cross VELLA at or above MEA/MCA for route of flight.

TAKEOFF RUNWAY 22: Climb on MUE VOR/DME R-234 to cross JASON at or above MEA southwest bound.