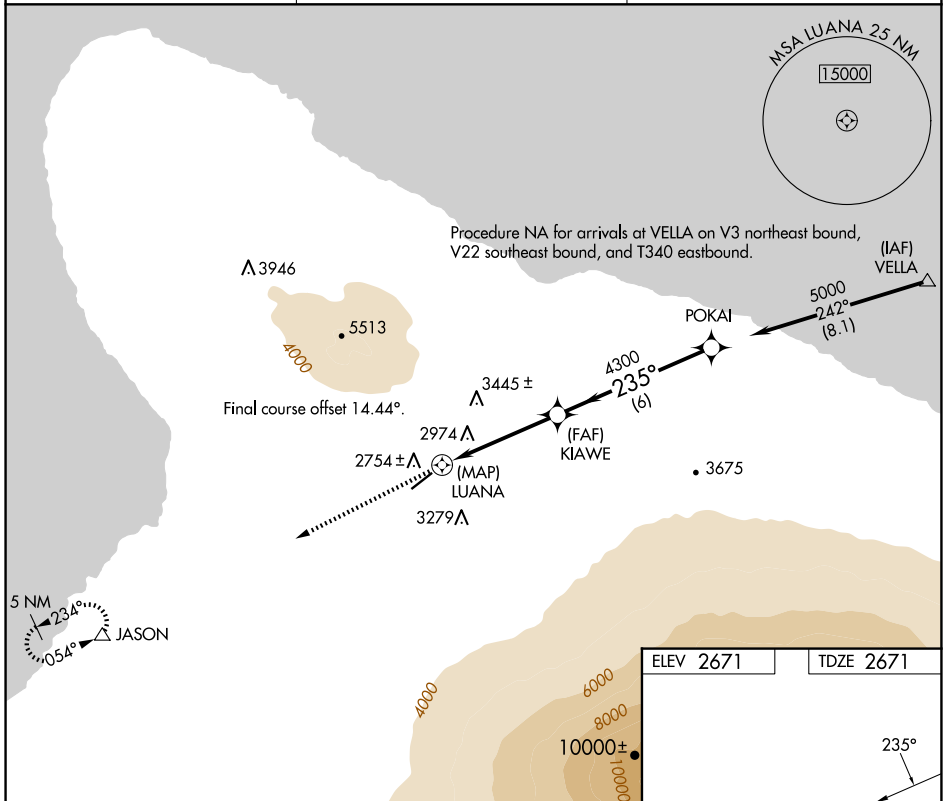


APP CRS	Rwy Idg	5197
235°	TDZE	2671
	Apt Elev	2671

RNAV (GPS) RWY 22

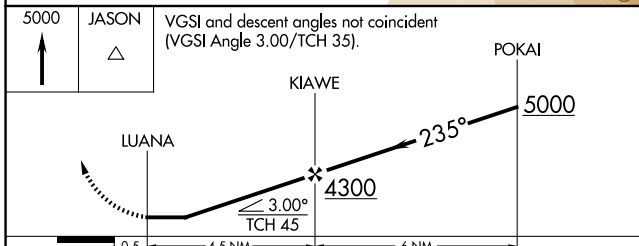
WAIMEA-KOHALA (MUE)(PHMU)

RNP APCH - GPS.		MISSED APPROACH: Climb to 5000 direct JASON and hold.
⚠ Circling NA NW of Rwy 4-22. Rwy 22 helicopter visibility reduction below 1 SM NA. When local altimeter setting not received procedure NA.		
AWOS-3PT 120.0	HCF CENTER 118.45 278.3	CTAF 122.9



PAC, 14 MAY 2026 to 09 JUL 2026

ELEV 2671	TDZE 2671
-----------	-----------



CATEGORY	A	B	C	D
LNVA MDA	3660-1¼ 989 (1000-1¼)	3660-1½ 989 (1000-1½)	3660-3	989 (1000-3)
CIRCLING	3660-1¼ 989 (1000-1¼)	3660-1½ 989 (1000-1½)	3660-3	3980-3 1309 (1400-3)

MIRL Rwy 4-22
REIL Rws 4 and 22