

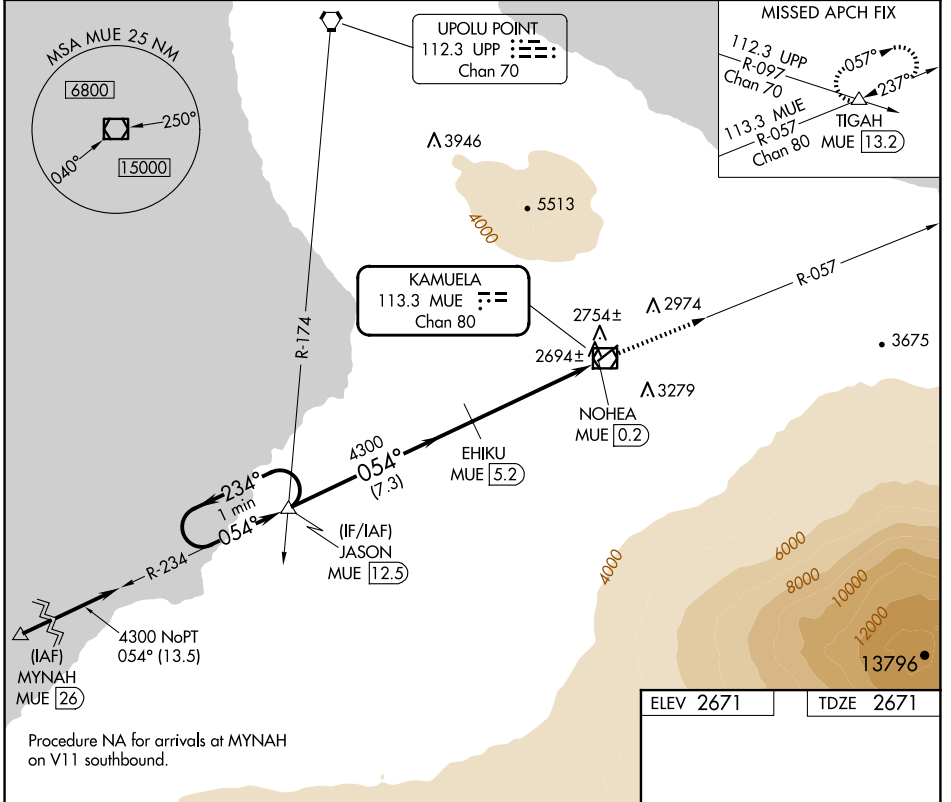
VOR/DME MUE 113.3 Chan 80	APP CRS 054°	Rwy Idg TDZE Apt Elev	5197 2671 2671
--	------------------------	-----------------------------	---

VOR/DME RWY 4
WAIMEA-KOHALA (MUE)(PHMU)

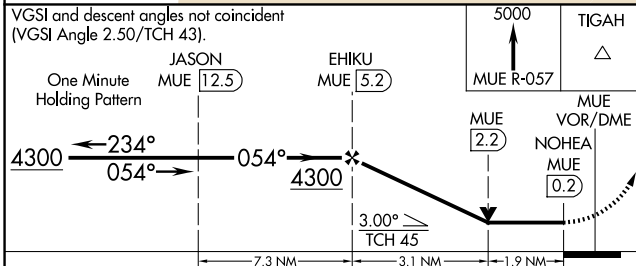
NA Circling NA northwest of Rwy 4-22.
When local altimeter setting not received, procedure NA.

MISSED APPROACH: Climb to 5000 on MUE VOR/DME R-057 to TIGAH INT/MUE 13.2 DME and hold.

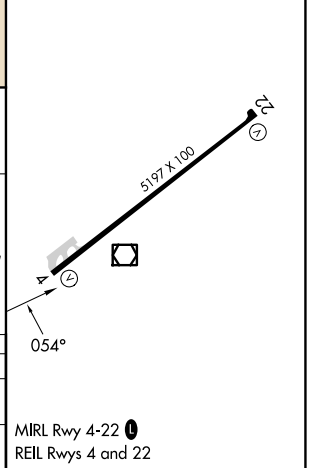
AWOS-3PT 120.0	HCF CENTER 118.45 278.3	CTAF 122.9
--------------------------	-----------------------------------	----------------------



Procedure NA for arrivals at MYNAH on V11 southbound.



ELEV 2671	TDZE 2671
-----------	-----------



CATEGORY	A	B	C	D
S-4	3360-1 689 (700-1)		3360-2 689 (700-2)	
CIRCLING	3520-1¼ 849 (900-1¼)		3620-2¾ 949 (1000-2¾)	3980-3 1309 (1400-3)

MIRL Rwy 4-22
REIL Rws 4 and 22

PAC, 14 MAY 2026 to 09 JUL 2026

PAC, 14 MAY 2026 to 09 JUL 2026