

WAAS CH 63033 W17A	APP CRS 169°	Rwy Ldg TDZE Apt Elev	3398 455 461
--	------------------------	-----------------------------	---

RNAV (GPS) RWY 17

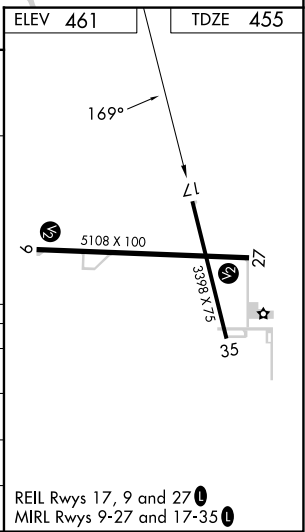
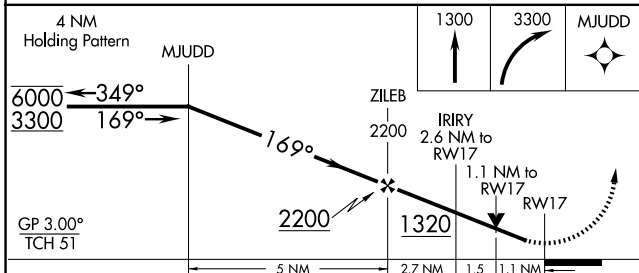
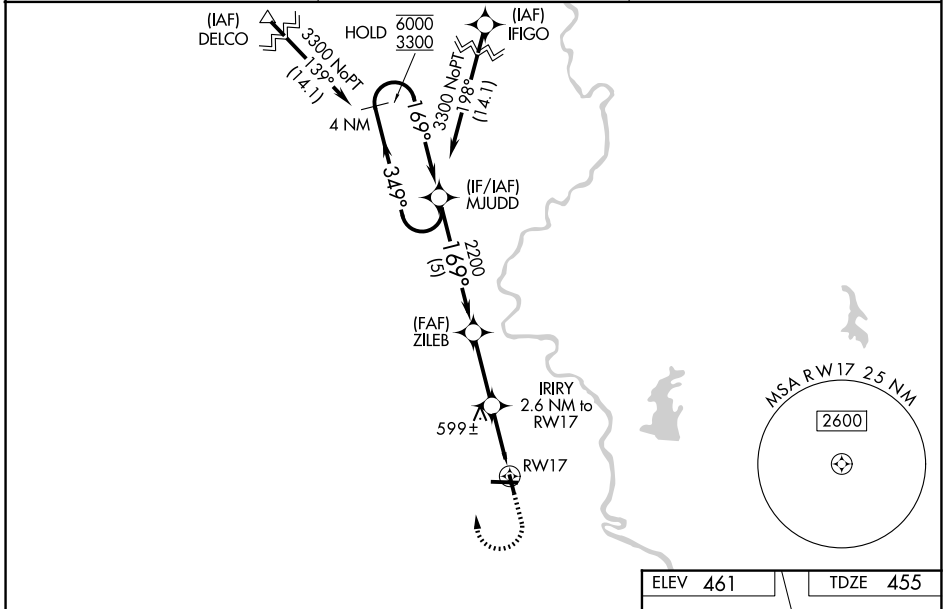
CRAWFORD COUNTY (RSV)

RNP APCH - GPS.

▼ Rwy 17 helicopter visibility reduction below 3/4 SM NA.
▲ For uncompensated Baro-VNAV systems,
 LNAV/VNAV NA below -15°C or above 54°C.

MISSED APPROACH: Climb to 1300 then climbing right turn to 3300 direct MJUDD and hold.

AWOS-3 120.50	HULMAN APP CON 135.35 339.8	UNICOM 123.0 (CTAF) 0
-------------------------	---------------------------------------	---------------------------------



CATEGORY	A	B	C	D
LPV DA	734-1	279 (300-1)		NA
LNAV/VNAV DA	812-1 1/8	357 (400-1 1/8)		NA
LNAV MDA	860-1	405 (400-1)	860-1 1/8 405 (400-1 1/8)	NA
CIRCLING	940-1 479 (500-1)	1080-1 619 (700-1)	1120-1 3/4 659 (700-1 3/4)	NA

REIL Rwy 17, 9 and 27 **0**
 MIRL Rwy 9-27 and 17-35 **0**

EC-3, 14 MAY 2026 to 11 JUN 2026

EC-3, 14 MAY 2026 to 11 JUN 2026