

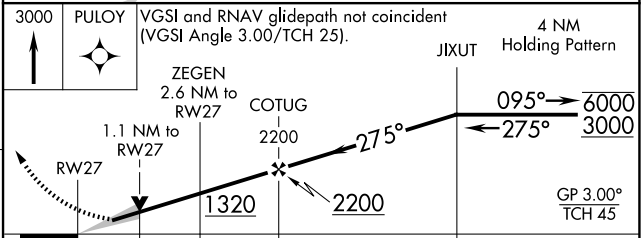
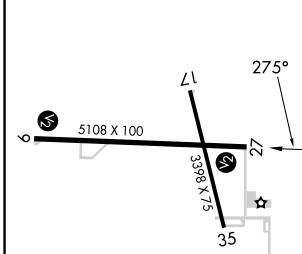
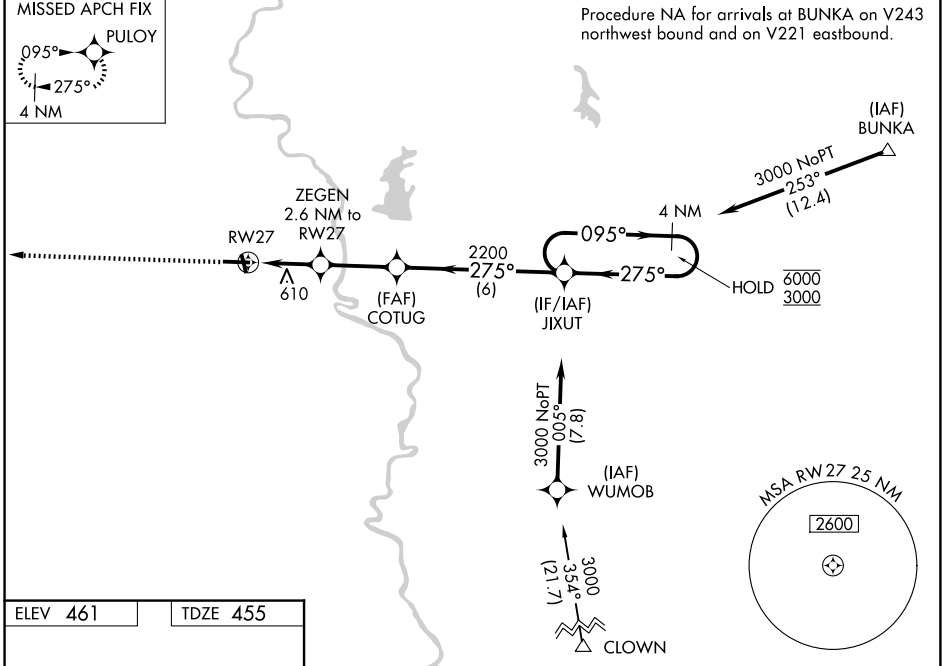
WAAS CH 69509 W27A	APP CRS 275°	Rwy Ldg 5108 TDZE 455 Apt Elev 461
--	------------------------	---

RNAV (GPS) RWY 27

CRAWFORD COUNTY (RSV)

RNP APCH-GPS.		MISSED APPROACH: Climb to 3000 direct PULOV and hold.
	For uncompensated Baro-VNAV systems, LNAV/VNAV NA below -15°C or above 54°C.	

AWOS-3 120.50	HULMAN APP CON 135.35 339.8	UNICOM 123.0 (CTAF)
-------------------------	---------------------------------------	-------------------------------



CATEGORY	A		B		C		D	
LPV DA			705-1		250 (300-1)			
LNAV/VNAV DA			845-1¼		390 (400-1¼)			
LNAV MDA	840-1		385 (400-1)		840-1⅛		385 (400-1⅛)	
CIRCLING	940-1 479 (500-1)		1080-1 619 (700-1)		1120-1¾ 659 (700-1¾)		1180-2¼ 719 (800-2¼)	

ELEV 461 TDZE 455

REIL Rwy 17, 9 and 27

MIRL Rwy 9-27 and 17-35

EC-3, 14 MAY 2026 to 11 JUN 2026

EC-3, 14 MAY 2026 to 11 JUN 2026