

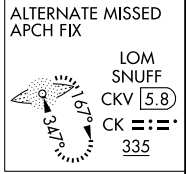
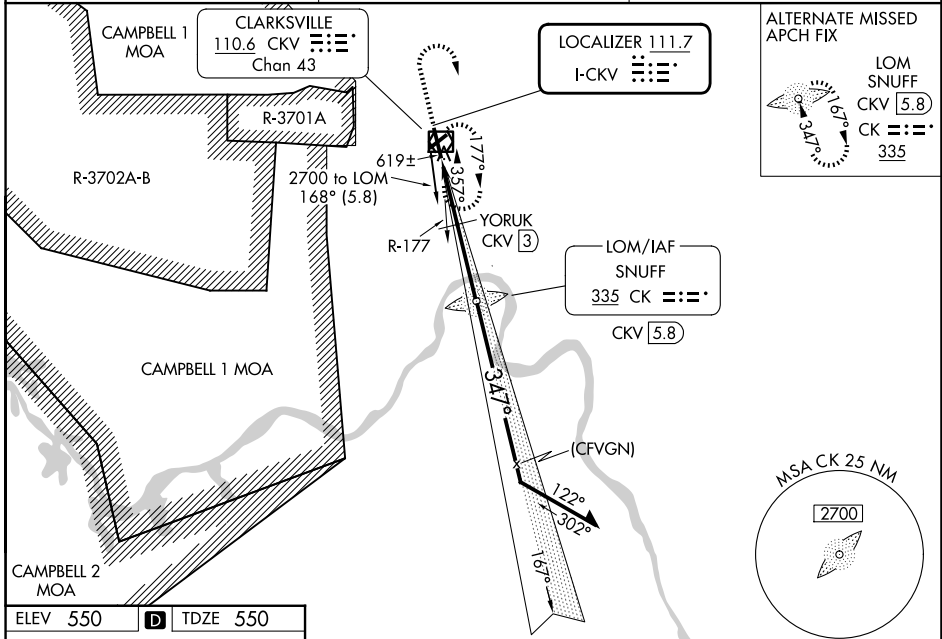
LOC I-CKV 111.7	APP CRS 347°	Rwy Ldg TDZE Apt Elev	5999 550 550
---------------------------	------------------------	-----------------------------	---

LOC RWY 35

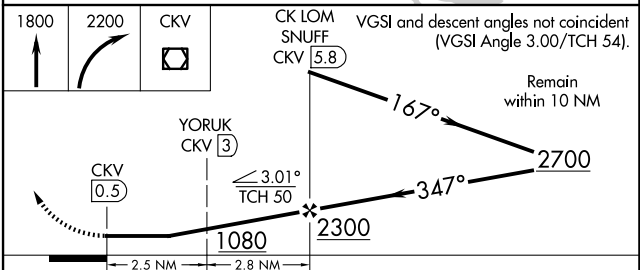
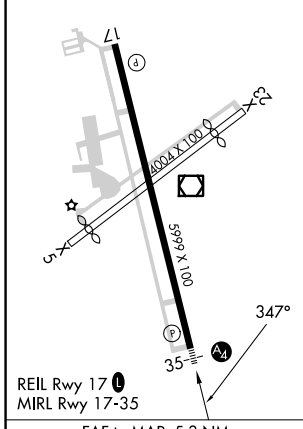
OUTLAW FLD (CKV)

ADF required. RADAR required.	MALS	MISSED APPROACH: Climb to 1800 then climbing right turn to 2200 direct CKV VOR/DME and hold.
▼ Rwy 35 helicopter visibility reduction below 3/4 SM NA. Circling Rwy 17, 23 NA at night. When local altimeter setting not received, use HOP altimeter setting. Circling NA west of Rwy 17-35. *DME from CKV VOR/DME.	Ⓜ	

ASOS 134.575	CAMPBELL APP CON 134.35 307.025	UNICOM 122.8 (CTAF) 0
------------------------	---	---------------------------------



ELEV 550	D	TDZE 550
----------	----------	----------



CATEGORY	A	B	C	D
S-LOC 35	1080-3/4	530 (600-3/4)	1080-1 1/4	530 (600-1 1/4)
CIRCLING	1080-1	530 (600-1)	1080-1 1/2 530 (600-1 1/2)	1200-2 650 (700-2)
YORUK FIX MINIMUMS * (DME REQUIRED)				
S-LOC 35	880-3/4		330 (400-3/4)	
CIRCLING	1000-1 450 (500-1)	1020-1 470 (500-1)	1020-1 1/2 470 (500-1 1/2)	1200-2 650 (700-2)

SE-1, 14 MAY 2026 to 11 JUN 2026

SE-1, 14 MAY 2026 to 11 JUN 2026