

VORTAC FNT <b>116.9</b> Chan <b>116</b>	APP CRS <b>281°</b>	Rwy Ldg <b>4300</b> TDZE <b>736</b> Apt Elev <b>736</b>
-----------------------------------------------	------------------------	---------------------------------------------------------------

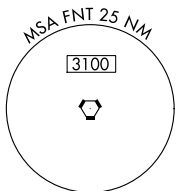
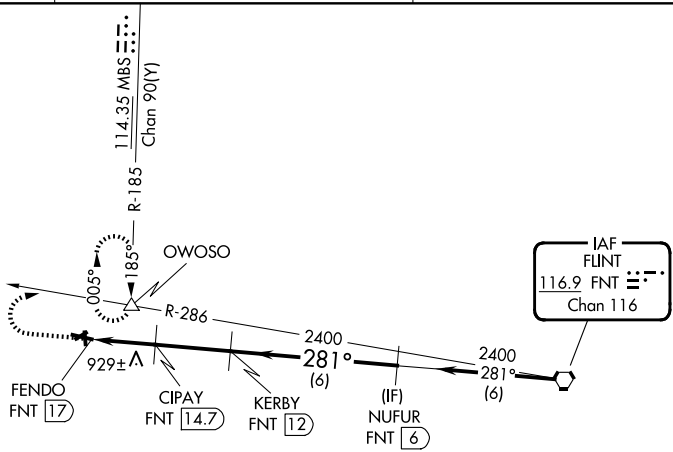
# VOR/DME RWY 29

OWOSSO COMMUNITY (RNP)

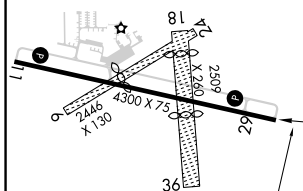
▼ Circling NA to Rwy 6, 18, 24 and 36. Rwy 29 helicopter visibility reduction below ¼ SM NA. When local altimeter setting not received, use Flint altimeter setting and increase all MDA 60 feet and S-29 Cat C visibility ¼ mile.

MISSED APPROACH: Climb to 1900 then climbing right turn to 2700 via FNT VORTAC R-286 to OWOSSO INT and hold.

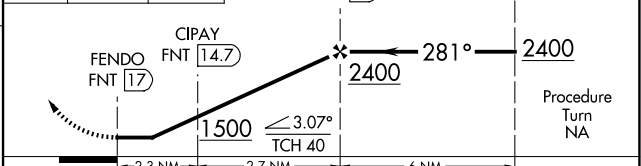
AWOS-3P <b>118.025</b>	GREAT LAKES APP CON * <b>128.55 257.9</b>	UNICOM <b>123.0</b> (CTAF) <b>0</b>
---------------------------	----------------------------------------------	----------------------------------------



ELEV <b>736</b>	TDZE <b>736</b>
-----------------	-----------------



1900	2700	OWOSSO	VGSI and descent angles not coincident (VGSI Angle 3.00/TCH 40).
↑	FNT R-286	△	



CATEGORY	A	B	C	D
S-29	1180-1	444 (500-1)	1180-1¼ 444 (500-1¼)	NA
CIRCLING	1220-1 483 (500-1)	1260-1 523 (600-1)	1400-1¾ 663 (700-1¾)	NA

REIL Rwy 11 and 29 **0**  
MIRL Rwy 11-29 **0**

EC-1, 14 MAY 2026 to 11 JUN 2026

EC-1, 14 MAY 2026 to 11 JUN 2026