

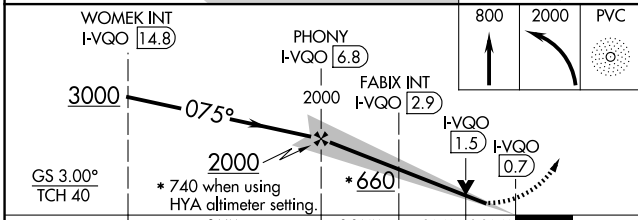
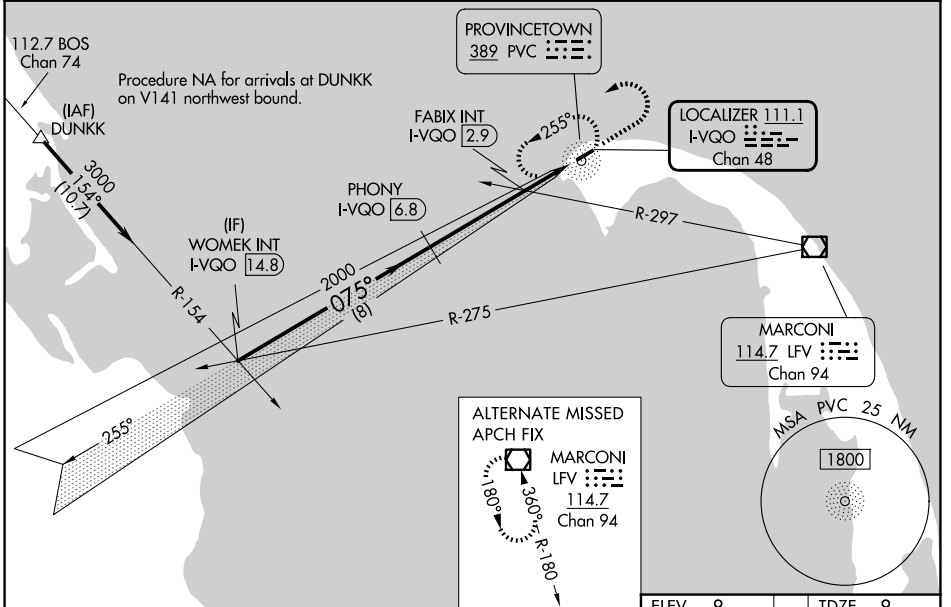
LOC/DME I-VQO 111.1 Chan 48	APP CRS 075°	Rwy Ldg TDZE Apt Elev	3502 8 8
--	------------------------	-----------------------------	-------------------------------------

ILS or LOC RWY 7

PROVINCETOWN MUNI (PVC)

ADF required. DME required for LOC only.		MALSF	MISSED APPROACH: Climb to 800 then climbing left turn to 2000 direct PVC NDB and hold, continue climb-in-hold to 2000.
<p>NA Circling Rwy 25 NA at night. VDP NA when using HYA altimeter setting. Inop table does not apply to S-ILS 7. For inop ALS when using HYA altimeter setting, increase S-ILS 7 all Cats visibility to 3/8 SM. When local altimeter setting not received, use HYA altimeter setting and increase all S-ILS 7 to 271 feet and all MDA 80 feet.</p>			

AWOS-3PT 119.275	BOSTON APP CON 118.2	CLNC DEL 120.65	UNICOM 122.8 (CTAF)	122.85 0
----------------------------	--------------------------------	---------------------------	-------------------------------	------------------------



CATEGORY	A	B	C	D
S-ILS 7	208-3/4	200 (200-3/4)		NA
S-LOC 7	660-3/4	652 (700-3/4)		NA
CIRCLING	660-1	652 (700-1)		NA
FABIX FIX MINIMUMS (DUAL VOR RECEIVERS OR DME REQUIRED)				
S-LOC 7	320-3/4	312 (400-3/4)		NA
CIRCLING	460-1	660-1		NA

ELEV 8	TDZE 8
REIL Rwy 25 0	
HIRL Rwy 7-25 0	
FAF to MAP 6.1 NM	
Knots	60 90 120 150 180
Min:Sec	6:06 4:04 3:03 2:26 2:02

NE-1, 14 MAY 2026 to 11 JUN 2026

NE-1, 14 MAY 2026 to 11 JUN 2026