

WAAS CH <b>86738</b> <b>W07A</b>	APP CRS <b>075°</b>	Rwy Ldg TDZE Apt Elev	<b>3502</b> <b>8</b> <b>8</b>
--	------------------------	-----------------------------	-------------------------------------

# RNAV (GPS) RWY 7

PROVINCETOWN MUNI (PVC)

RNP APCH - GPS.

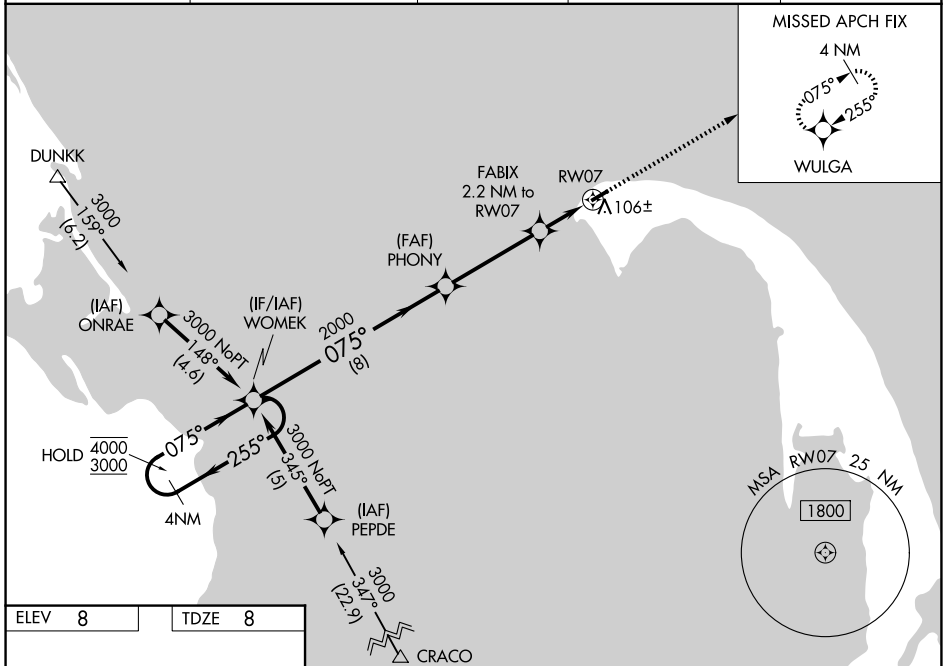
Baro-VNAV and VDP NA when using HYA altimeter setting. Circling Rwy 25 NA at night.  
 For uncompensated Baro-VNAV systems, LNAV/VNAV NA below -15°C or above 54°C.  
 Inop table does not apply to LPV. For inop ALS when using HYA altimeter setting, increase LPV and LNAV/VNAV all Cats visibility to 7/8 SM. When local altimeter setting not received, use HYA altimeter setting; increase LPV DA to 271 feet, increase LNAV/VNAV DA to 331 feet; increase all MDA 80 feet.

MALSF

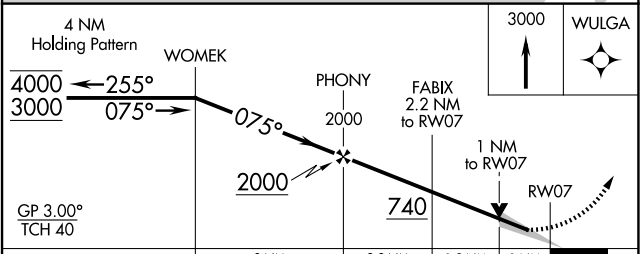
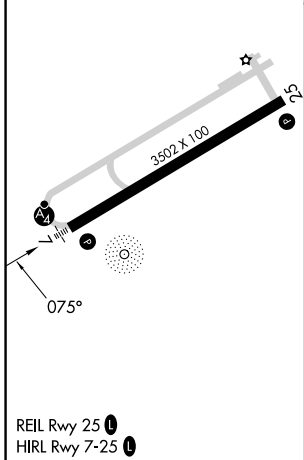


MISSED APPROACH:  
Climb to 3000 direct WULGA and hold.

AWOS-3PT <b>119,275</b>	BOSTON APP CON <b>118.2</b>	CLNC DEL <b>120.65</b>	UNICOM <b>122.8</b> (CTAF)	<b>122.85</b>
----------------------------	--------------------------------	---------------------------	-------------------------------	---------------



ELEV <b>8</b>	TDZE <b>8</b>
---------------	---------------



CATEGORY	A	B	C	D
LPV DA	208-3/4	200 (200-3/4)		NA
LNAV/VNAV DA	268-3/4	260 (300-3/4)		NA
LNAV MDA	360-3/4	352 (400-3/4)		NA
CIRCLING	460-1	660-1		NA
	452 (500-1)	652 (700-1)		

NE-1, 14 MAY 2026 to 11 JUN 2026

NE-1, 14 MAY 2026 to 11 JUN 2026