

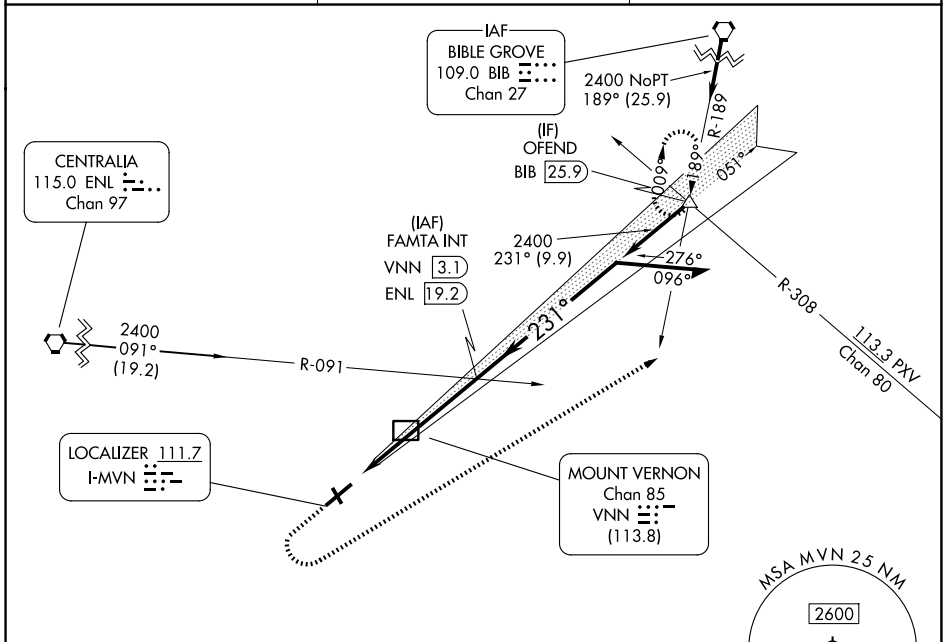
LOC I-MVN 111.7	APP CRS 231°	Rwy Ldg TDZE Apt Elev	5572 471 480
---------------------------	------------------------	-----------------------------	---

ILS or LOC RWY 23

MOUNT VERNON (MVN)

<p>Circling Rwy 15, 33 NA at night.</p>	<p>MALS R</p>	<p>MISSED APPROACH: Climb to 2300 then climbing left turn to 2400 on heading 060° and on BIB VORTAC R-189 to OFEND and hold.</p>

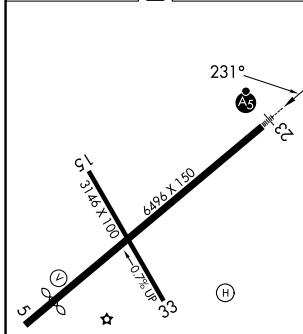
AWOS-3PT 118.2	KANSAS CITY CENTER 127.7 351.825	UNICOM 123.0 (CTAF) 0
--------------------------	--	---------------------------------



EC-3, 14 MAY 2026 to 11 JUN 2026

EC-3, 14 MAY 2026 to 11 JUN 2026

ELEV 480	D	TDZE 471
----------	----------	----------



2300	2400	BIB R-189	OFEND	FAMTA INT VNN [3.1]	Remain within 10 NM
↑	hdg 060°		△		
		VNN DME [1.2]		2400	051°
				2400	231°
				2400	GS 3.00° TCH 52
		1.6 NM	4.3 NM		

HIRL Rwy 5-23	MIRL Rwy 15-33	FAF to MAP 5.9 NM			
Knots	60	90	120	150	180
Min:Sec	5:54	3:56	2:57	2:22	1:58

CATEGORY	A	B	C	D
S-ILS 23	671-1/2 200 (200-1/2)			
S-LOC 23	1020-1/2	549 (600-1/2)	1020-1 1/8	549 (600-1 1/8)
CIRCLING	1020-1 540 (600-1)		1140-1 3/4 660 (700-1 3/4)	1380-3 900 (1000-3)