

WAAS CH 58010 W23A	APP CRS 231°	Rwy Ldg 5572 TDZE 471 Apt Elev 480
--	------------------------	---

RNAV (GPS) RWY 23

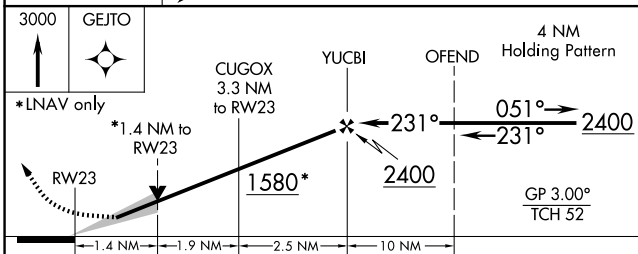
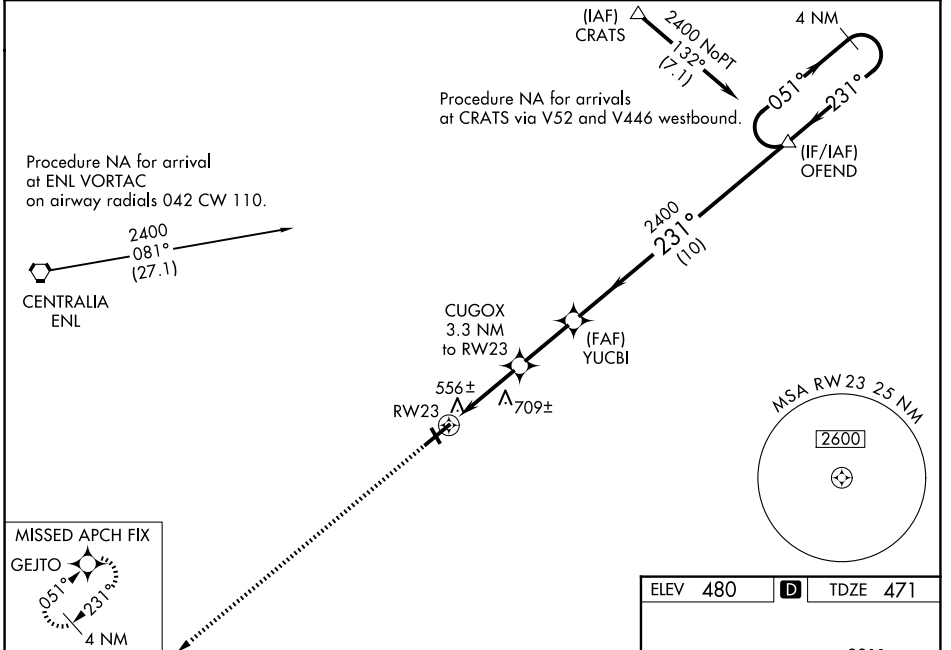
MOUNT VERNON (MVN)

⚠ For uncompensated Baro-VNAV systems, LNAV/VNAV NA below -15° C (5°F) or above 48° C (118°F). DME/DME RNP-0.3 NA. When local altimeter setting not received, use Centralia altimeter setting: increase LPV DA to 766 feet; increase LNAV VNAV DA to 918 feet; increase all MDAs 60 feet and LNAV visibility Cat C/D and Circling Cat C ¼ SM. For inop MALSRS, when using Centralia altimeter setting, increase LPV all Cats visibility to 1 mile. VDP and Baro-VNAV NA when using Centralia altimeter setting. Circling to Rwy 15/33 NA at night.

MALSRS

MISSED APPROACH:
Climb to 3000 direct GEJTO and hold.

AWOS-3PT 118.2	KANSAS CITY CENTER 127.7 351.825	UNICOM 123.0(CTAF) 0
--------------------------	--	--------------------------------



ELEV 480	D	TDZE 471
----------	----------	----------

231°

AS

5.000

3.146 X 700

6.696 X 150

0.720 X 33

H

HIRL Rwy 5-23 0

MIRL Rwy 15-33 0

CATEGORY	A	B	C	D
LPV DA	721-½		250 (300-½)	
LNAV/VNAV DA	873-1		402 (400-1)	
LNAV MDA	960-½ 489 (500-½)	960-¾ 489 (500-¾)		960-1 489 (500-1)
CIRCLING	1000-1 520 (600-1)	1140-1¾ 660 (700-1¾)		1380-3 900 (900-3)

EC-3, 14 MAY 2026 to 11 JUN 2026

EC-3, 14 MAY 2026 to 11 JUN 2026