

| | | |
|--|------------------------|---|
| WAAS CH 53304 W01A | APP CRS 010° | Rwy Ldg 5010 TDZE 979 Apt Elev 979 |
|--|------------------------|---|

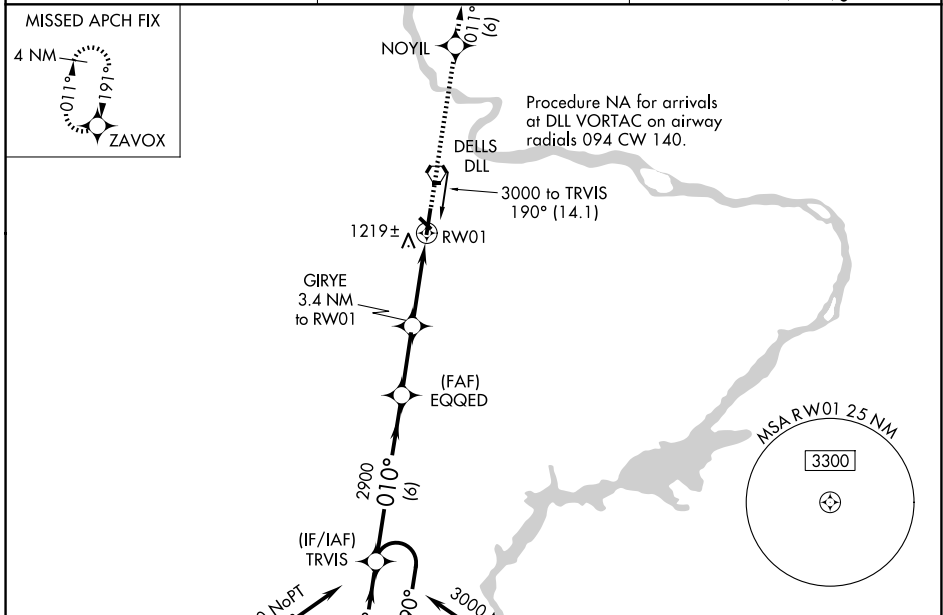
RNAV (GPS) RWY 1

BARABOO/WISCONSIN DELLS RGNL (DLL)

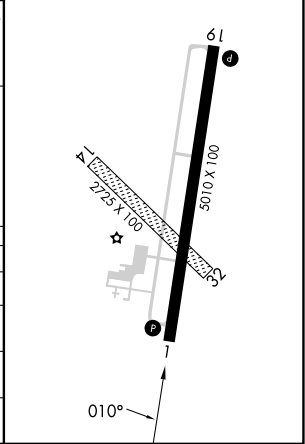
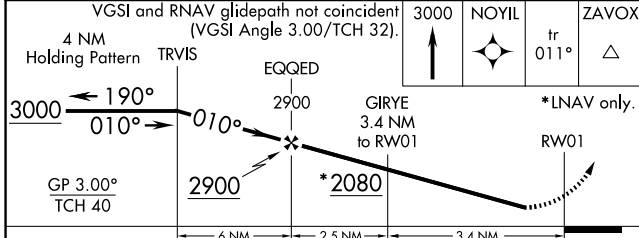
⚠ Baro-VNAV NA when using Lone Rock altimeter setting. For uncompensated Baro-VNAV systems, LNAV/VNAV NA below -22°C (-7°F) or above 54°C (130°F). DME/DME RNP-0.3 NA. When local altimeter setting not received, use Lone Rock altimeter setting and increase all DA 97 feet/MDA 100 feet. Increase LPV all Cats visibility 1/8 mile, LNAV/VNAV all Cats visibility 3/8 mile, LNAV Cat C visibility 3/8 mile, and Circling Cat C visibility 1/2 mile. Circling NA to Rwy 14-32. Rwy 1 helicopter visibility reduction below 3/4 SM NA.

MISSED APPROACH: Climb to 3000 direct NOYIL and on track 011° to ZAVOX and hold.

| | | |
|--------------------------|---|--------------------------------|
| AWOS-3 118.325 | MADISON APP CON* 135.45 343.7 | UNICOM 123.05 (CTAF) |
|--------------------------|---|--------------------------------|



| | |
|-----------------|--------------------|
| ELEV 979 | TDZE 979 |
| MIRL Rwy 1-19 | REIL Rwys 1 and 19 |



| CATEGORY | A | B | C | D |
|--------------|--------------------|-----------------|----------------------------|----|
| LPV DA | 1229-1 | 250 (300-1) | | NA |
| LNAV/VNAV DA | 1391-1 3/8 | 412 (500-1 3/8) | | NA |
| LNAV MDA | 1480-1 501 (600-1) | | 1480-1 3/8 501 (600-1 3/8) | NA |
| CIRCLING | 1520-1 541 (600-1) | | 1580-1 3/4 601 (700-1 3/4) | NA |

EC-3, 14 MAY 2026 to 11 JUN 2026

EC-3, 14 MAY 2026 to 11 JUN 2026