

WAAS CH 78232 W19A	APP CRS 190°	Rwy Ldg TDZE Apt Elev	5010 979 979
---------------------------------	------------------------	-----------------------------	---

RNAV (GPS) RWY 19

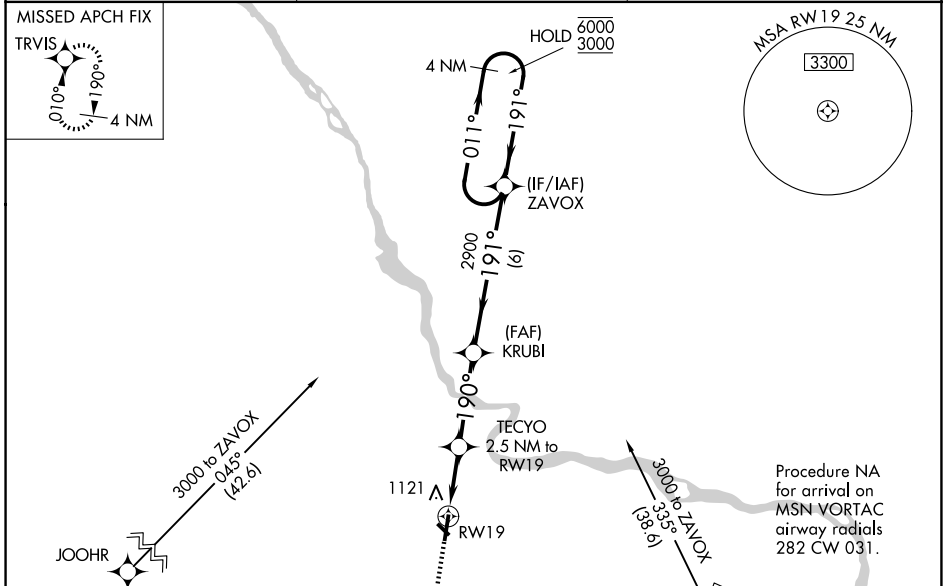
BARABOO/WISCONSIN DELLS RGNL (DLL)

RNP APCH.

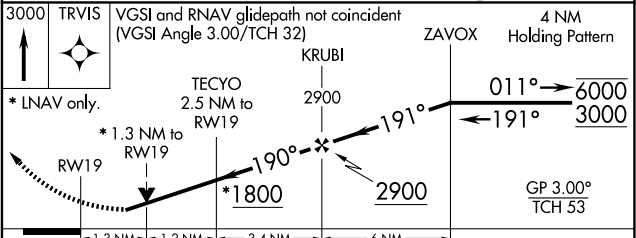
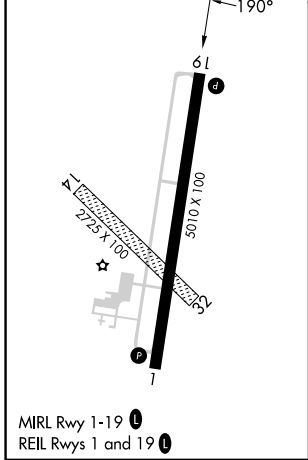
⚠ Circling NA to Rwy 14 and 32.
Rwy 19 helicopter visibility reduction below 3/4 SM NA.
For uncompensated Baro-VNAV systems, LNAV/VNAV NA below -16°C or above 54°C.

MISSED APPROACH:
Climb to 3000 direct TRVIS and hold.

AWOS-3 118.325	MADISON APP CON ★ 135.45 343.7	UNICOM 123.05 (CTAF) 0
--------------------------	--	----------------------------------



ELEV 979	TDZE 979
----------	----------



CATEGORY	A	B	C	D
LPV DA	1341-1		362 (400-1)	NA
LNAV/VNAV DA	1302-1		323 (400-1)	NA
LNAV MDA	1420-1	441 (500-1)	1420-1 3/8 441 (500-1 3/8)	NA
CIRCLING	1520-1	541 (600-1)	1580-1 3/4 601 (700-1 3/4)	NA

EC-3, 14 MAY 2026 to 11 JUN 2026

EC-3, 14 MAY 2026 to 11 JUN 2026