

| | | |
|-------------|----------|-------------|
| APP CRS | Rwy Ldg | 4700 |
| 095° | TDZE | 740 |
| | Apt Elev | 747 |

RNAV (GPS) RWY 9

DOWAGIAC MUNI (C91)

RNP APCH - GPS.

▽ Rwy 9 helicopter visibility reduction below 1 SM NA. Circling NA to Rws 4 and 22.
Obtain local altimeter setting on CTAF, when not received, use EKM altimeter setting and increase all MDAs 60 feet, and LNAV visibility Cats C and D ¼ SM, and Circling visibility Cats C and D ½ SM. Straight-in and Circling Rwy 9 NA at night.

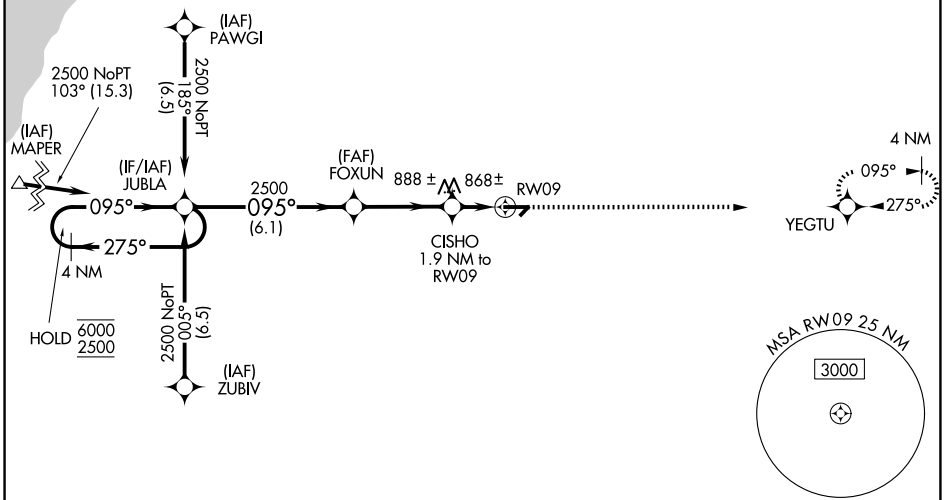
▲ NA

MISSED APPROACH: Climb to 2700 direct YEGTU and hold.

SOUTH BEND APP CON *
118.55 257.8

UNICOM
122.8 (CTAF) 0

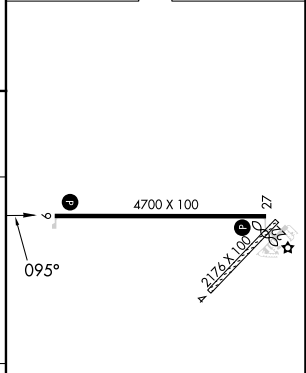
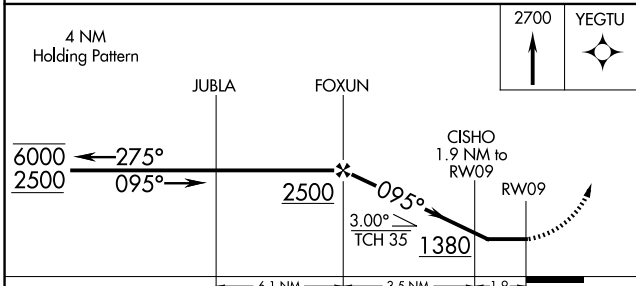
Procedure NA for arrivals at MAPER on V526 northwest bound.



EC-1, 14 MAY 2026 to 11 JUN 2026

EC-1, 14 MAY 2026 to 11 JUN 2026

| | |
|----------|----------|
| ELEV 747 | TDZE 740 |
|----------|----------|



| CATEGORY | A | B | C | D |
|----------|-----------------------|-----------------------|-------------------------|-------------------------|
| LNAV MDA | 1120-1 | | 380 (400-1) | |
| CIRCLING | 1300-1 553 (600-1) | 1320-1 573 (600-1) | 1320-1½ 573 (600-1½) | 1480-2¼ 733 (800-2¼) |

REIL Rws 9 and 27 **0**
MIRL Rwy 9-27 **0**