

COPTER RNAV (GPS) Y RWY 14

MANSFIELD MUNI (1B9)

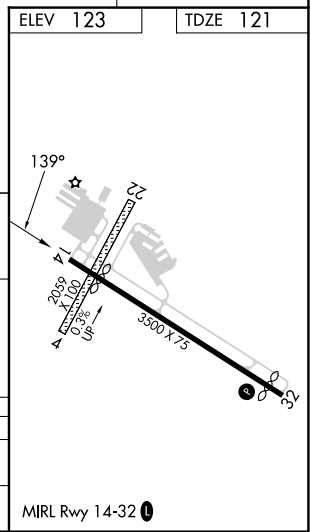
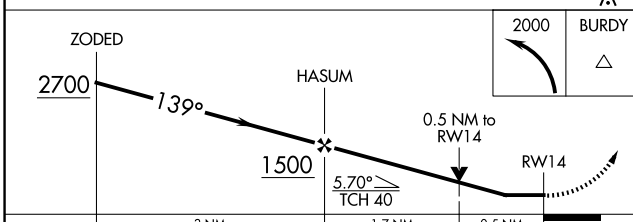
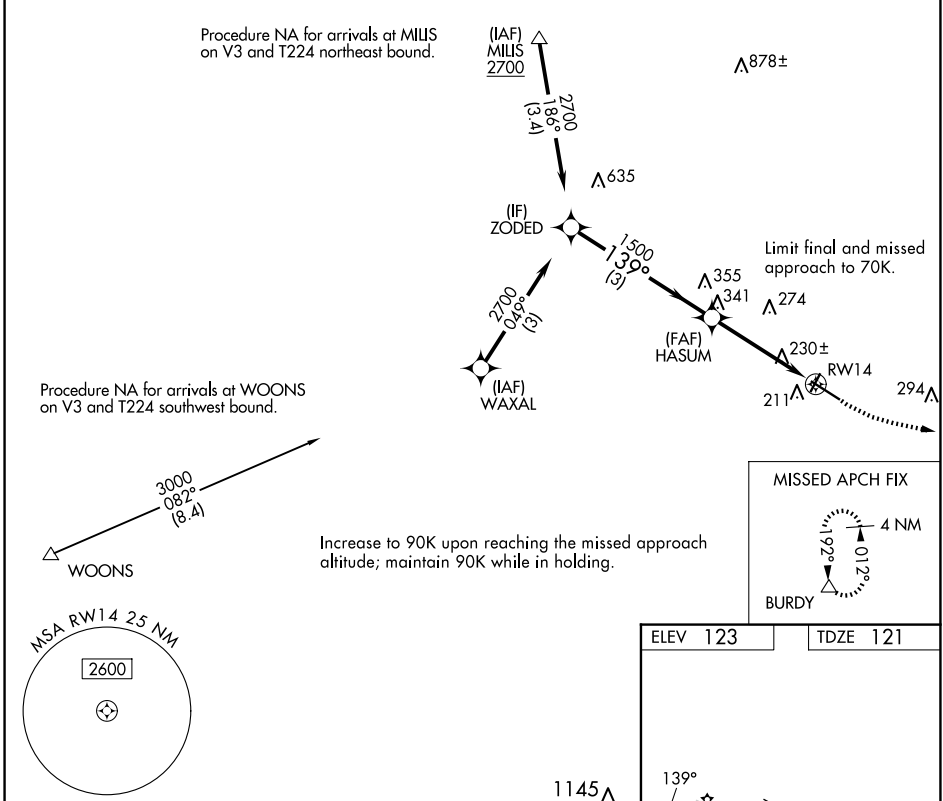
WAAS CH 50444 W14B	APP CRS 139°	Rwy Ldg 2991 TDZE 121 Apt Elev 123
--	------------------------	---

RNP APCH - GPS.

⚠ VDP NA when using OWD altimeter setting. Rwy 14 helicopter visibility reduction below 3/4 SM NA. Procedure NA at night. When local altimeter setting not received, use OWD altimeter setting and increase all MDAs 40 feet.

MISSED APPROACH: Climbing left turn to 2000 direct BURDY and hold.

AWOS-3PT 118.675	BOSTON APP CON 124.1	UNICOM 123.0 (CTAF)
----------------------------	--------------------------------	-------------------------------



CATEGORY	COPTER	
LP MDA	480-1	359 (400-1)
LNAV MDA	540-1	419 (500-1)

COPTER RNAV (GPS) Y RWY 14

NE-1, 14 MAY 2026 to 11 JUN 2026

NE-1, 14 MAY 2026 to 11 JUN 2026