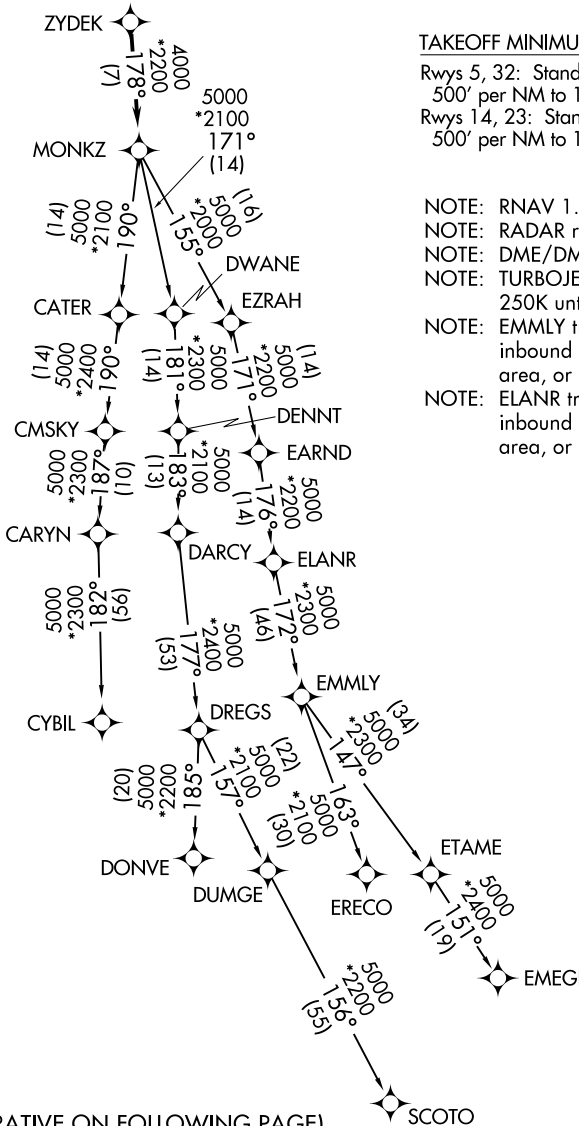
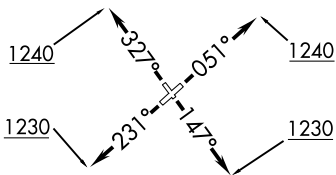


**TOP ALTITUDE:
3000**

ATIS
132.4
GND CON
121.65
WAUKEGAN TOWER★
120.05 273.55
DEP CON
120.55



TAKEOFF MINIMUMS

Rwys 5, 32: Standard with minimum climb of 500' per NM to 1240.
Rwys 14, 23: Standard with minimum climb of 500' per NM to 1230.

- NOTE: RNAV 1.
- NOTE: RADAR required.
- NOTE: DME/DME/IRU or GPS required.
- NOTE: TURBOJET departures maintain 250K until advised by ATC.
- NOTE: EMMLY transition: For aircraft inbound to Indianapolis Terminal area, or as assigned by ATC.
- NOTE: ELANR transition: For aircraft inbound to Cincinnati Terminal area, or as assigned by ATC.

EC-3, 14 MAY 2026 to 11 JUN 2026

EC-3, 14 MAY 2026 to 11 JUN 2026

(NARRATIVE ON FOLLOWING PAGE)

NOTE: Chart not to scale.

MONKZ FIVE DEPARTURE (RNAV)



DEPARTURE ROUTE DESCRIPTION

TAKEOFF RWY 5: Climb heading 051° or as assigned by ATC to at or above 1240, expect vectors to ZYDEK. Thence. . . .

TAKEOFF RWY 14: Climb heading 147° or as assigned by ATC to at or above 1230, expect vectors to ZYDEK. Thence. . . .

TAKEOFF RWY 23: Climb heading 231° or as assigned by ATC to at or above 1230, expect vectors to ZYDEK. Thence. . . .

TAKEOFF RWY 32: Climb heading 327° or as assigned by ATC to at or above 1240, expect vectors to ZYDEK. Thence. . . .

. . . .on track 178° to MONKZ, then on (transition), maintain 3000, expect filed altitude ten minutes after departure.

CYBIL TRANSITION (MONKZ5.CYBIL)

DONVE TRANSITION (MONKZ5.DONVE)

ELANR TRANSITION (MONKZ5.ELANR)

EMEGE TRANSITION (MONKZ5.EMEGE)

EMMLY TRANSITION (MONKZ5.EMMLY)

ERECO TRANSITION (MONKZ5.ERECO)

SCOTO TRANSITION (MONKZ5.SCOTO)

EC-3, 14 MAY 2026 to 11 JUN 2026

EC-3, 14 MAY 2026 to 11 JUN 2026