

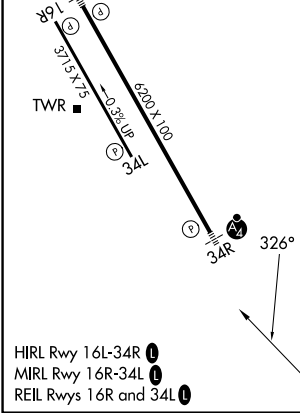
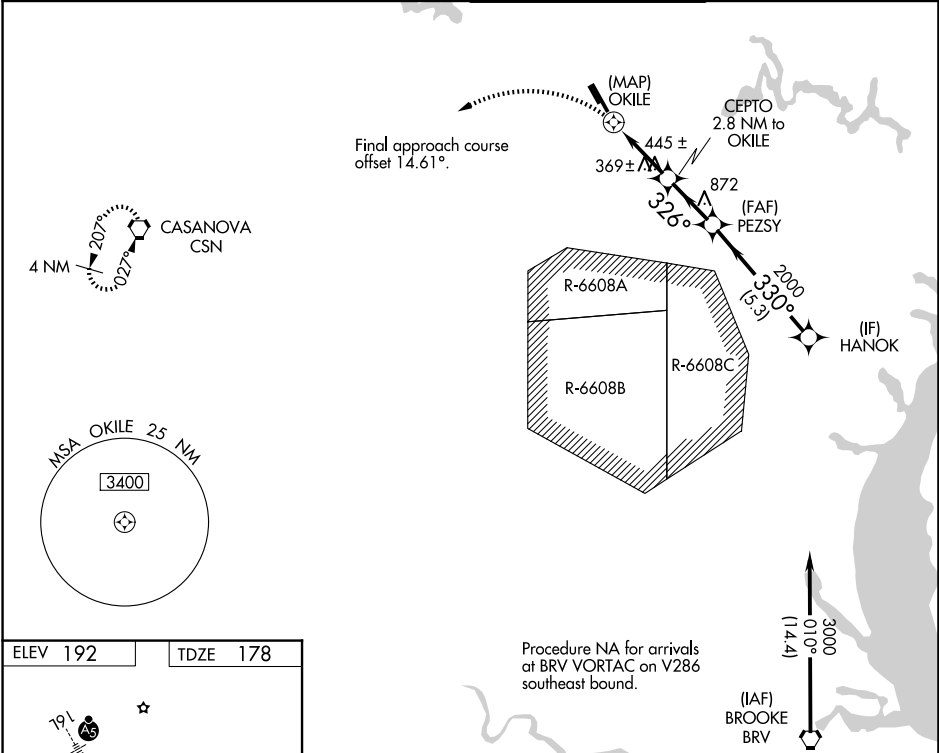
WAAS CH 63130 W34A	APP CRS 326°	Rwy Ldg TDZE Apt Elev	6200 178 192
--	------------------------	-----------------------------	---

RNAV (GPS) RWY 34R

MANASSAS RGNL/HARRY P DAVIS FLD (HEF)

RNP APCH. ▼ Rwy 34R helicopter visibility reduction below 3/4 SM NA. For inop ALS, increase LP and LNAV Cats C/D visibility to 1 3/8 SM. ▲	MALSF M	MISSED APPROACH: Climbing left turn to 3000 direct CSN VORTAC and hold.
--	------------	---

ATIS 125.175	POTOMAC APP CON 128.525 306.925	MANASSAS TOWER * 133.1 (CTAF) 360.75	GND CON 121.8
------------------------	---	--	-------------------------



	3000	CSN		HANOK				
	OKILE	CEPTO 2.8 NM to OKILE	PEZSY	3000				
	1 NM to OKILE	1260	326°	2000				
	0.5	1 NM	1.8 NM	2.3 NM	5.3 NM			
CATEGORY	A		B		C		D	
LP MDA	620-1 442 (500-1)							
LNAV MDA	640-1		462 (500-1)		640-1 3/8		462 (500-1 1/8)	
CIRCLING	700-1 508 (600-1)		740-1 548 (600-1)		840-1 3/4 648 (700-1 1/4)		920-2 1/4 728 (800-2 1/4)	

NE-3, 14 MAY 2026 to 11 JUN 2026

NE-3, 14 MAY 2026 to 11 JUN 2026