

APP CRS	Rwy Ldg	<b>4699</b>
<b>086°</b>	TDZE	<b>28</b>
	Apt Elev	<b>28</b>

# RNAV (GPS) RWY 9

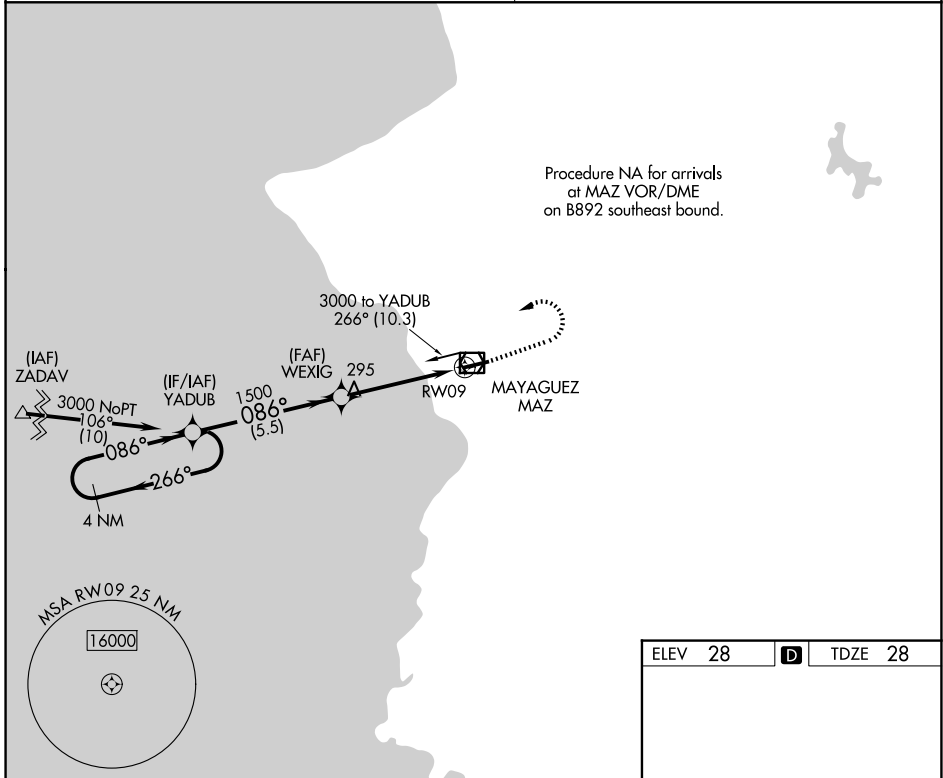
EUGENIO MARIA DE HOSTOS (MAZ)(TJMZ)

RNP APCH.  
 Procedure NA at night. Rwy 9 helicopter visibility reduction below 1 SM NA.  
 When Class E surface area not in effect, except for operators with approved weather reporting service, procedure NA.

MISSED APPROACH: Climb to 2000 then climbing left turn to 3000 direct YADUB and hold.

SAN JUAN CERAP APP CON  
**118.75 269.0**

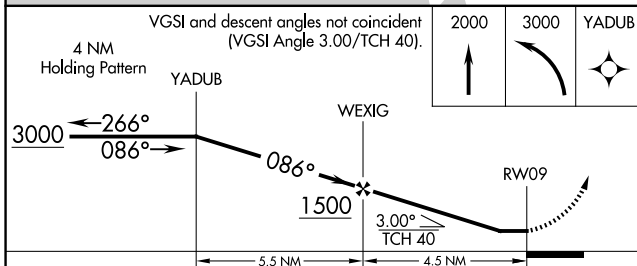
UNICOM  
**122.8 (CTAF) 0**



Procedure NA for arrivals at MAZ VOR/DME on B892 southeast bound.

SE-3, 14 MAY 2026 to 11 JUN 2026

SE-3, 14 MAY 2026 to 11 JUN 2026



ELEV 28	<b>D</b>	TDZE 28
---------	----------	---------

REIL Rwy 9 0  
 MIRL Rwy 9-27

CATEGORY	A	B	C	D
RNAV MDA	760-1 732 (800-1)	760-1½ 732 (800-1½)	760-2 732 (800-2)	NA
CIRCLING	1100-1¼ 1072 (1100-1¼)	1100-1½ 1072 (1100-1½)	1460-3 1432 (1500-3)	NA