

| | | | |
|--|------------------------|-----------------------------|---|
| WAAS CH 58038 W12A | APP CRS 125° | Rwy Ldg TDZE Apt Elev | 4000 1121 1125 |
|--|------------------------|-----------------------------|---|

RNAV (GPS) RWY 12

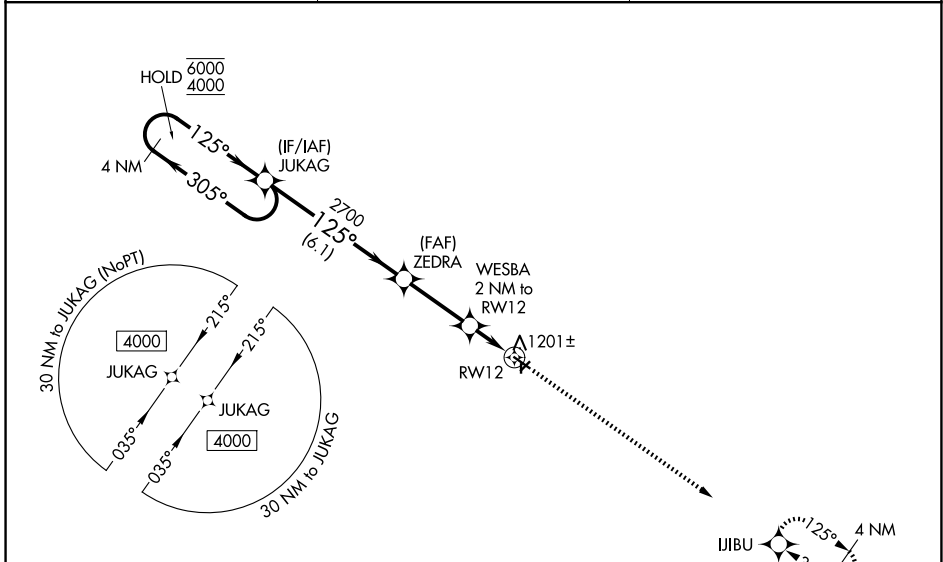
NORTHEAST IOWA RGNL (CCY)

RNP APCH - GPS.

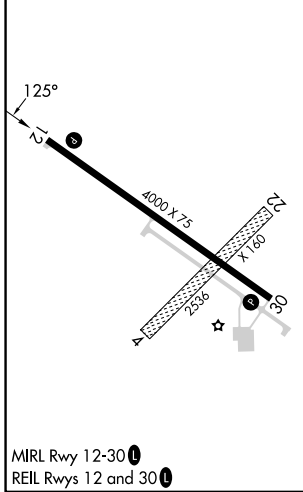
⚠ For uncompensated Baro-VNAV systems, LNAV/VNAV NA below -23°C or above 54°C. Baro-VNAV and VDP NA when using ALO altimeter setting. Circling NA to Rwys 4 and 22. When local altimeter setting not received, use ALO altimeter setting and increase LPV DA to 1481 feet; increase LNAV/VNAV DA to 1481 feet; increase all MDAs 120 feet and LNAV visibility Cat C ¾ SM, and Circling visibility Cat C ½ SM.

MISSED APPROACH: Climb to 4000 direct IJIBU and hold, continue climb-in-hold to 4000.

| | | |
|--------------------------|--|---------------------------------|
| AWOS-3 125.525 | DES MOINES APP CON* 118.9 251.15 | UNICOM 122.8 (CTAF) 0 |
|--------------------------|--|---------------------------------|



| | |
|-----------|-----------|
| ELEV 1125 | TDZE 1121 |
|-----------|-----------|



| CATEGORY | A | B | C | D |
|--------------|-----------------------|-----------------------|-------------------------|----|
| LPV DA | | 1371-1 250 (300-1) | | NA |
| LNAV/VNAV DA | | 1371-1 250 (300-1) | | NA |
| LNAV MDA | | 1460-1 339 (400-1) | | NA |
| CIRCLING | 1520-1 395 (400-1) | 1580-1 455 (500-1) | 1760-1¾ 635 (700-1¾) | NA |

NC-3, 14 MAY 2026 to 11 JUN 2026

NC-3, 14 MAY 2026 to 11 JUN 2026