

WAAS CH <b>82438</b> <b>W30A</b>	APP CRS <b>305°</b>	Rwy Ldg <b>4000</b>
	TDZE <b>1121</b>	
	Apt Elev <b>1125</b>	

# RNAV (GPS) RWY 30

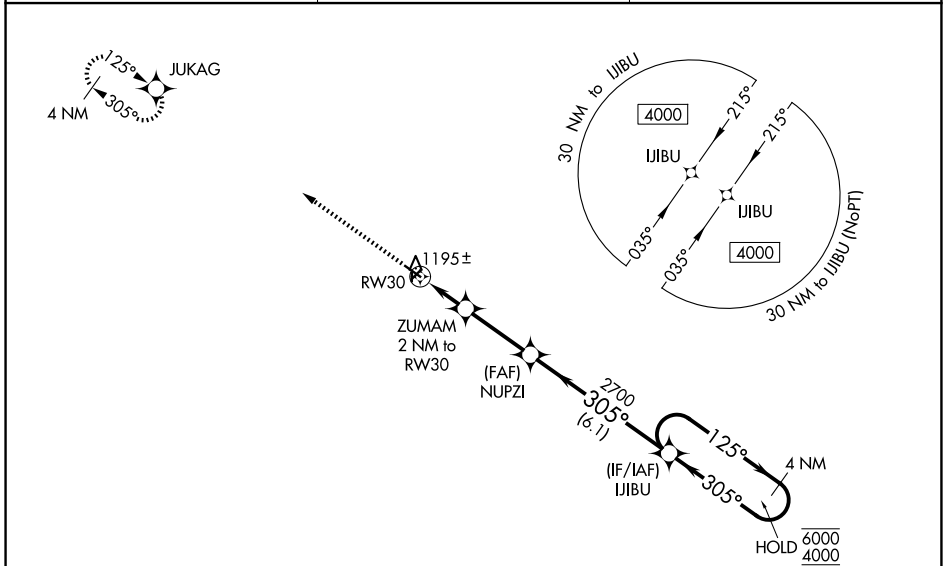
NORTHEAST IOWA RGNL (CCY)

RNP APCH - GPS.

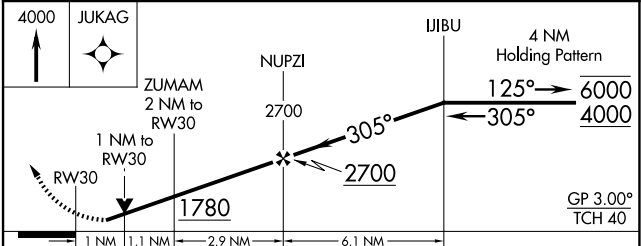
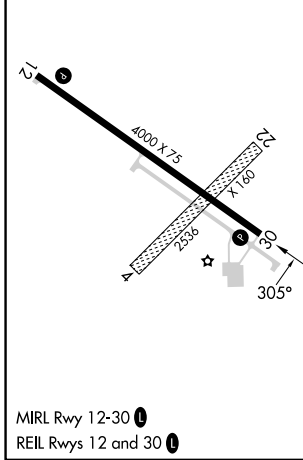
**⚠** For uncompensated Baro-VNAV systems, LNAV/VNAV NA below -23°C or above 54°C. Rwy 30 helicopter visibility reduction below 3/4 SM NA. Baro-VNAV and VDP NA when using ALO altimeter setting. Circling NA to Rwys 4 and 22. When local altimeter setting not received, use ALO altimeter setting and increase LPV DA to 1481 feet; increase LNAV/VNAV DA to 1481 feet; increase all MDAs 120 feet and LNAV visibility Cat C 3/8 SM, and Circling visibility Cat C 1/2 SM.

MISSED APPROACH: Climb to 4000 direct JUKAG and hold, continue climb-in-hold to 4000.

AWOS-3 <b>125.525</b>	DES MOINES APP CON ★ <b>118.9 251.15</b>	UNICOM <b>122.8 (CTAF) ①</b>
--------------------------	---	---------------------------------



ELEV 1125	TDZE 1121
-----------	-----------



CATEGORY	A	B	C	D
LPV DA		1371-1 250 (300-1)		NA
LNAV/VNAV DA		1371-1 250 (300-1)		NA
LNAV MDA		1460-1 339 (400-1)		NA
CIRCLING	1520-1 395 (400-1)	1580-1 455 (500-1)	1760-1 3/4 635 (700-1 3/4)	NA

NC-3, 14 MAY 2026 to 11 JUN 2026

NC-3, 14 MAY 2026 to 11 JUN 2026