

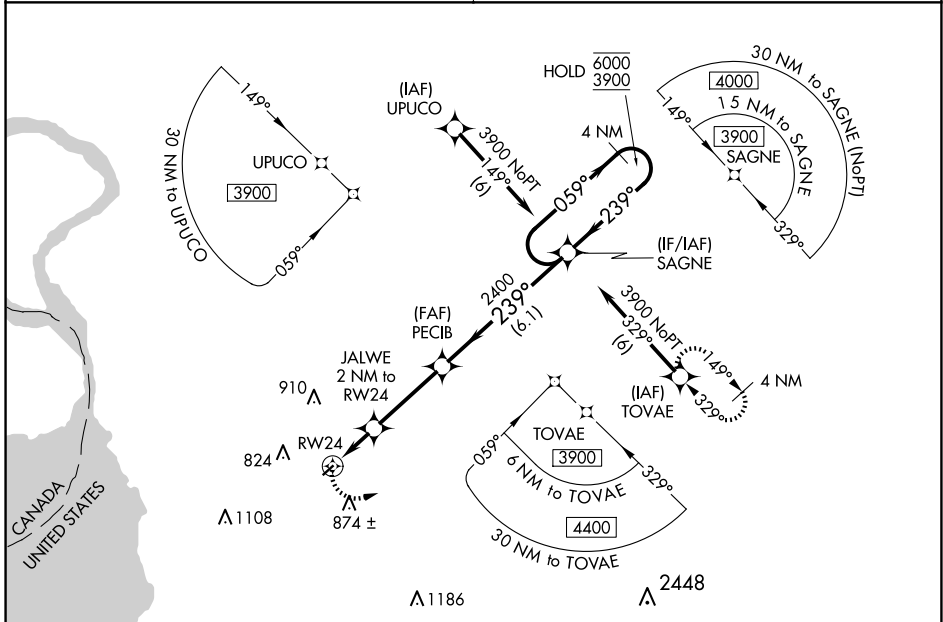
WAAS CH 42724 W24A	APP CRS 239°	Rwy Idg 2666 TDZE 670 Apt Elev 670
--	------------------------	---

RNAV (GPS) RWY 24

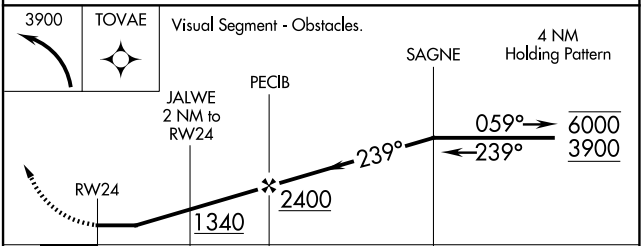
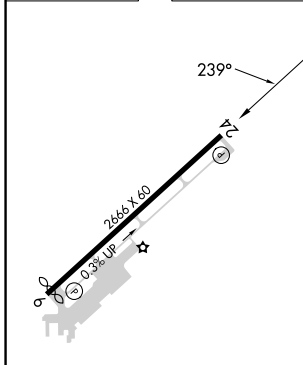
BUFFALO AIRFIELD (9G~~0~~)

RNP APCH.	<p>Procedure NA at night. Rwy 24 helicopter visibility reduction below 1 SM NA.</p> <p>NA Use Buffalo Niagara Intl altimeter setting.</p>	MISSED APPROACH: Climbing left turn to 3900 direct TOVAE and hold.
-----------	---	--

BUFFALO APP CON 126.15 263.125	UNICOM 122.975 (CTAF)
--	---------------------------------



ELEV 670	TDZE 670
----------	----------



CATEGORY	A	B	C	D
LP MDA	1160-1	490 (500-1)	NA	
LNAV MDA	1160-1	490 (500-1)	NA	

REIL Rwy 6 and 24
MIRL Rwy 6-24

NE-2, 14 MAY 2026 to 11 JUN 2026

NE-2, 14 MAY 2026 to 11 JUN 2026