

APP CRS	Rwy Ldg	<b>6434</b>
<b>292°</b>	TDZE	<b>23</b>
	Apt Elev	<b>23</b>

# RNAV (GPS) RWY 28L

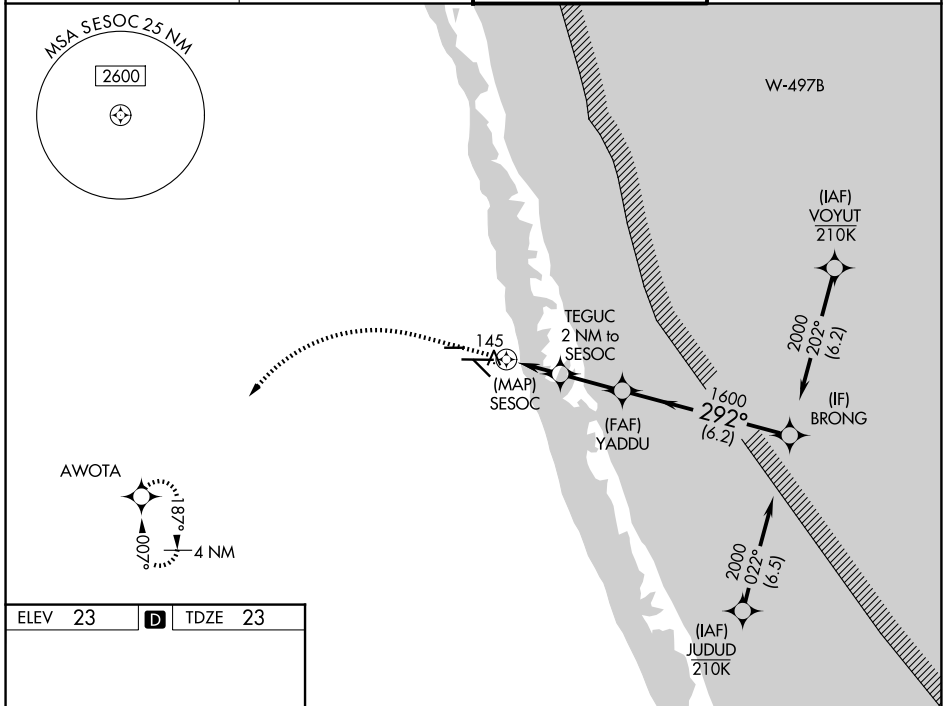
TREASURE COAST INTL (FPR)

RNP APCH-GPS.

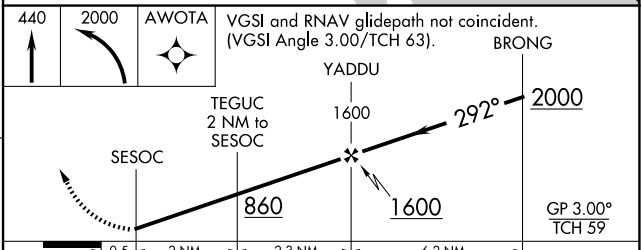
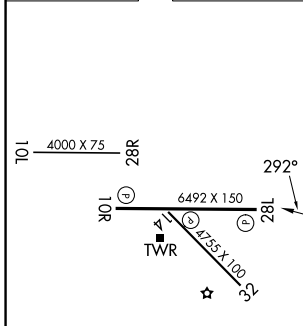
**⚠** For uncompensated Baro-VNAV systems, LNAV/VNAV NA below -15°C or above 54°C.  
Rwy 28L helicopter visibility reduction below  $\frac{3}{4}$  SM NA.

MISSED APPROACH: Climb to 440 then climbing left turn to 2000 direct AWOTA and hold.

ATIS <b>134,825</b>	PALM BEACH APP CON <b>132.8</b>	FORT PIERCE TOWER ★ <b>128.2 (CTAF) 0</b>	GND CON (GCO) <b>119,55</b>
------------------------	------------------------------------	--	--------------------------------



ELEV 23	<b>D</b>	TDZE 23
---------	----------	---------



CATEGORY	A	B	C	D
LNAV/VNAV DA		410-1 $\frac{1}{4}$	387 (400-1 $\frac{1}{4}$ )	
LNAV MDA		400-1	377 (400-1)	
CIRCLING	460-1 437 (500-1)	480-1 457 (500-1)	880-2 $\frac{1}{2}$ 857 (900-2 $\frac{1}{2}$ )	880-2 $\frac{3}{4}$ 857 (900-2 $\frac{3}{4}$ )

SE-3, 14 MAY 2026 to 11 JUN 2026

SE-3, 14 MAY 2026 to 11 JUN 2026