

CONRA FOUR DEPARTURE

SC-3, 14 MAY 2026 to 11 JUN 2026

DEPARTURE ROUTE DESCRIPTION

TAKEOFF RUNWAY 1: Climb on assigned heading for RADAR vectors to **CONRA INT** thence. . . .

TAKEOFF RUNWAY 19: Climb on heading 192° to 1900 before turning east. Then climb on assigned heading for RADAR vectors to **CONRA INT** thence. . . .

. . . on assigned transition. Maintain 3500, expect filed altitude 10 minutes after departure.

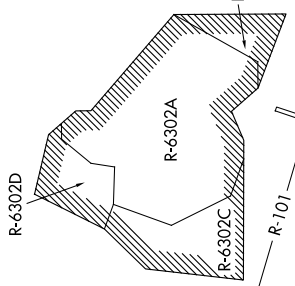
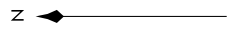
COLLEGE STATION TRANSITION (CONRA4.CLI): From over **CONRA INT** on CLL R-287 to CLL VORTAC.

LEONA TRANSITION (CONRA4.LOA): From over **CONRA INT** on LOA R-257 to LOA VORTAC.

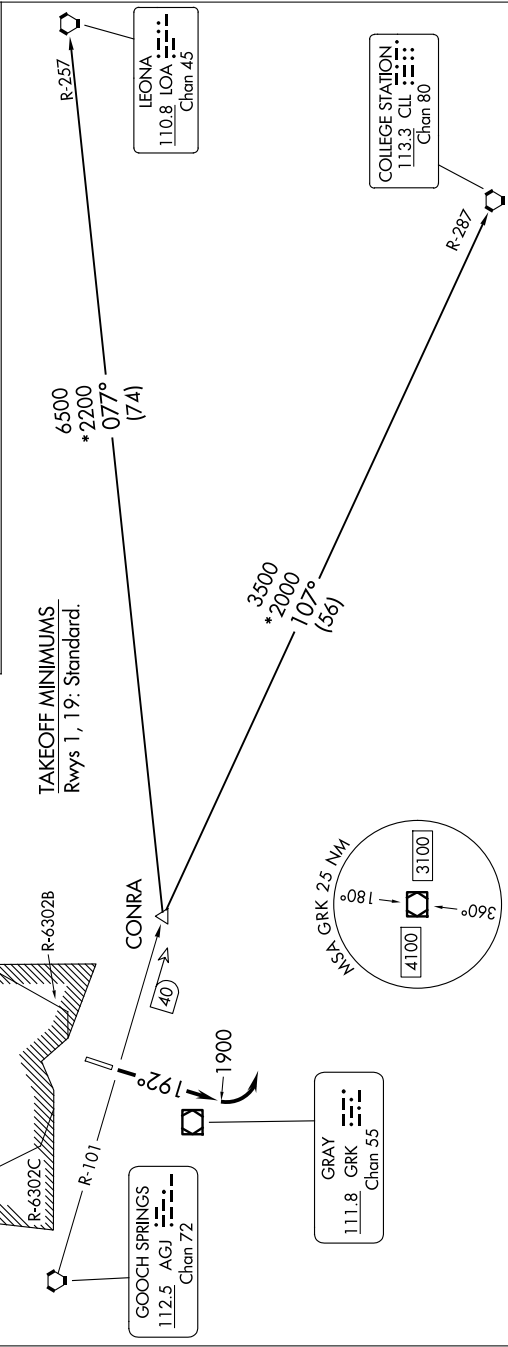
RADAR required.

TOP ALTITUDE:
3500

GRAY DEP CON
120.075 323.15
AWOS-3PT
128.575
CLNC DEL
121.7
CTAF
122.7



TAKEOFF MINIMUMS
Rwys 1, 19: Standard.

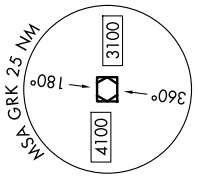


GRAY
111.8 GRK
Chan 55

GOOCH SPRINGS
112.5 AGJ
Chan 72

LEONA
110.8 LOA
Chan 45

COLLEGE STATION
113.3 CLL
Chan 80



NOTE: Chart not to scale.

CONRA FOUR DEPARTURE

(CONRA4.CONRA) 14MAY26

SC-3, 14 MAY 2026 to 11 JUN 2026