

MIAMI TWO DEPARTURE
 (MIA2.MIA) 26DEC24

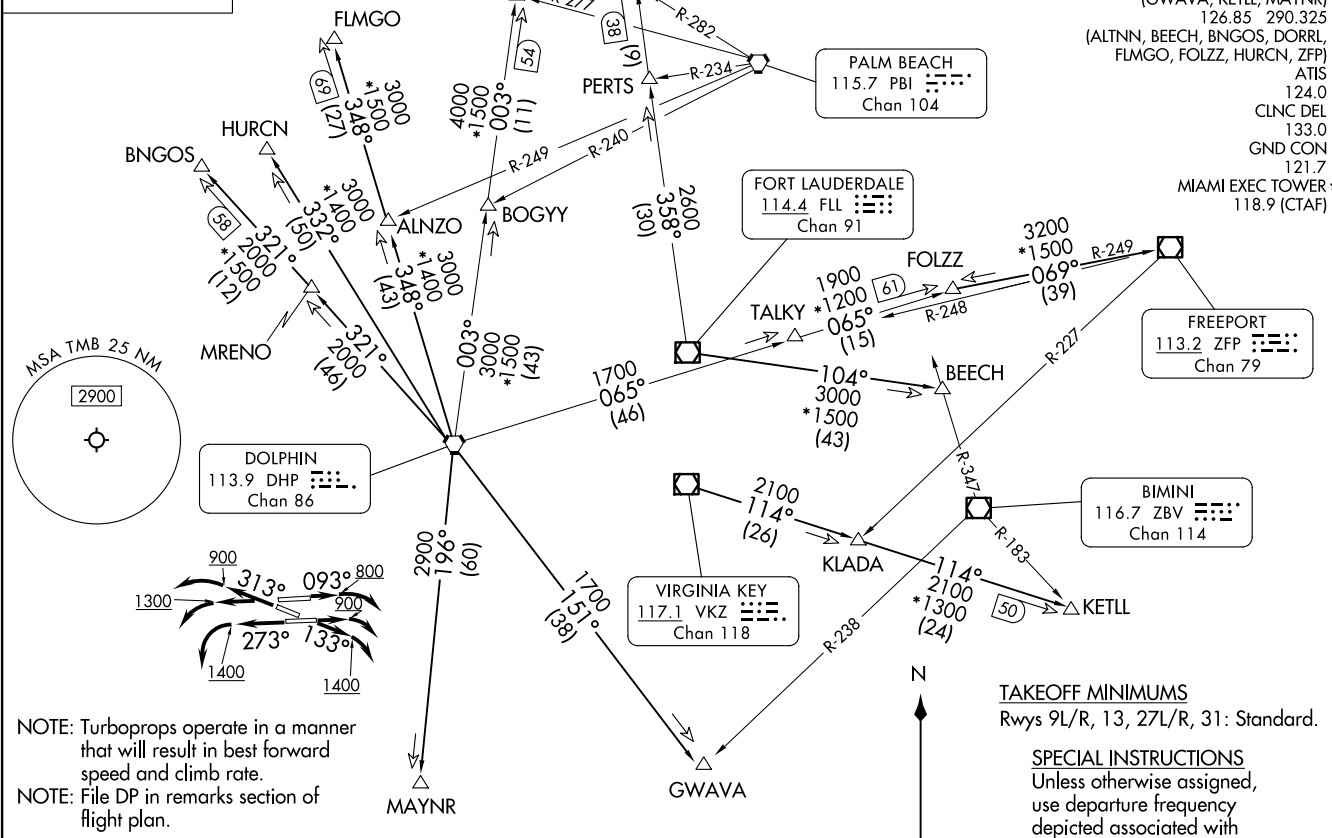
MIAMI TWO DEPARTURE
 (MIA2.MIA) 25331

AL-5349 (FAA)

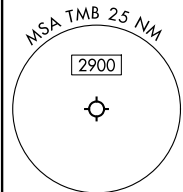
MIAMI EXEC (TMB)
 MIAMI, FLORIDA

TOP ALTITUDE: AS ASSIGNED BY ATC

RADAR and DME required.



MIAMI DEP CON
 125.5 354.1
 (GWAVA, KETLL, MAYNR)
 126.85 290.325
 (ALTNN, BEECH, BNGOS, DORRL,
 FLMGO, FOLZZ, HURCN, ZFP)
 ATIS
 124.0
 CLNC DEL
 133.0
 GND CON
 121.7
 MIAMI EXEC TOWER *
 118.9 (CTAF)



DOLPHIN
 113.9 DHP
 Chan 86

VIRGINIA KEY
 117.1 VKZ
 Chan 118

BIMINI
 116.7 ZBV
 Chan 114

TAKEOFF MINIMUMS
 Rwy's 9L/R, 13, 27L/R, 31: Standard.

SPECIAL INSTRUCTIONS
 Unless otherwise assigned,
 use departure frequency
 depicted associated with
 the transition in clearance.

NOTE: Turboprops operate in a manner that will result in best forward speed and climb rate.
 NOTE: File DP in remarks section of flight plan.

NOTE: Chart not to scale.

(CONTINUED ON FOLLOWING PAGE)

MIAMI, FLORIDA
 MIAMI EXEC (TMB)

MIAMI TWO DEPARTURE



DEPARTURE ROUTE DESCRIPTION

- TAKEOFF RUNWAY 9L: Climb on heading 093° to 800 before turning right, thence...
- TAKEOFF RUNWAY 9R: Climb on heading 093° to 900 before turning right, thence...
- TAKEOFF RUNWAY 13: Climb on heading 133° to 1400 before turning right, thence...
- TAKEOFF RUNWAY 27L: Climb on heading 273° to 1400 before turning left, thence...
- TAKEOFF RUNWAY 27R: Climb on heading 273° to 1300 before turning left, thence...
- TAKEOFF RUNWAY 31: Climb on heading 313° to 900 before turning left, thence...

... on transition, maintain ATC assigned altitude. Expect filed altitude 10 minutes after departure.

ALTNN TRANSITION (MIA2.ALTNN): From over FLL VOR/DME on FLL R-358 to ALTNN.

BEECH TRANSITION (MIA2.BEECH): From over FLL VOR/DME on FLL R-104 to BEECH.

BNGOS TRANSITION (MIA2.BNGOS): From over DHP VORTAC on DHP R-321 to BNGOS.

DORRL TRANSITION (MIA2.DORRL): From over DHP VORTAC on DHP R-003 to DORRL.

FLMGO TRANSITION (MIA2.FLMGO): From over DHP VORTAC on DHP R-348 to FLMGO.

FOLZZ TRANSITION (MIA2.FOLZZ): From over DHP VORTAC on DHP R-065 to FOLZZ.

FREEMPT TRANSITION (MIA2.ZFP): From over DHP VORTAC on DHP R-065 to FOLZZ then on ZFP R-249 to ZFP VOR/DME.

GWAVA TRANSITION (MIA2.GWAVA): From over DHP VORTAC on DHP R-151 to GWAVA.

HURCN TRANSITION (MIA2.HURCN): From over DHP VORTAC on DHP R-332 to HURCN.

KETLL TRANSITION (MIA2.KETLL): From over VKZ VOR/DME on VKZ R-114 to KETLL.

MAYNR TRANSITION (MIA2.MAYNR): From over DHP VORTAC on DHP R-196 to MAYNR.

SE-3, 14 MAY 2026 to 11 JUN 2026

SE-3, 14 MAY 2026 to 11 JUN 2026