

WAAS CH 78014 W12A	APP CRS 117°	Rwy Ldg 7508 TDZE 3002 Apt Elev 3011
--	------------------------	---

RNAV (GPS) RWY 12

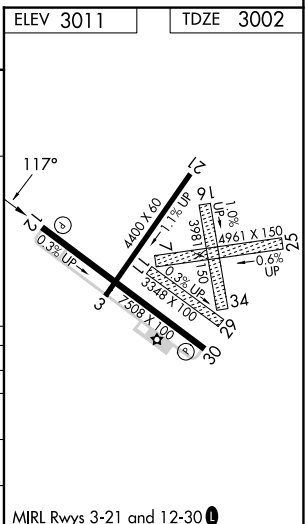
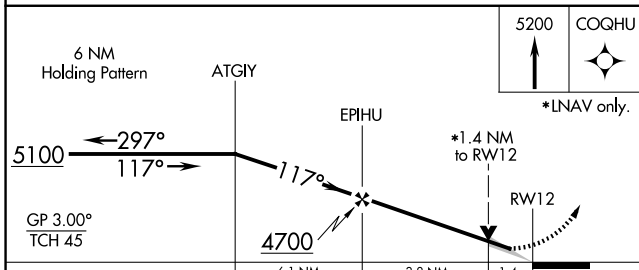
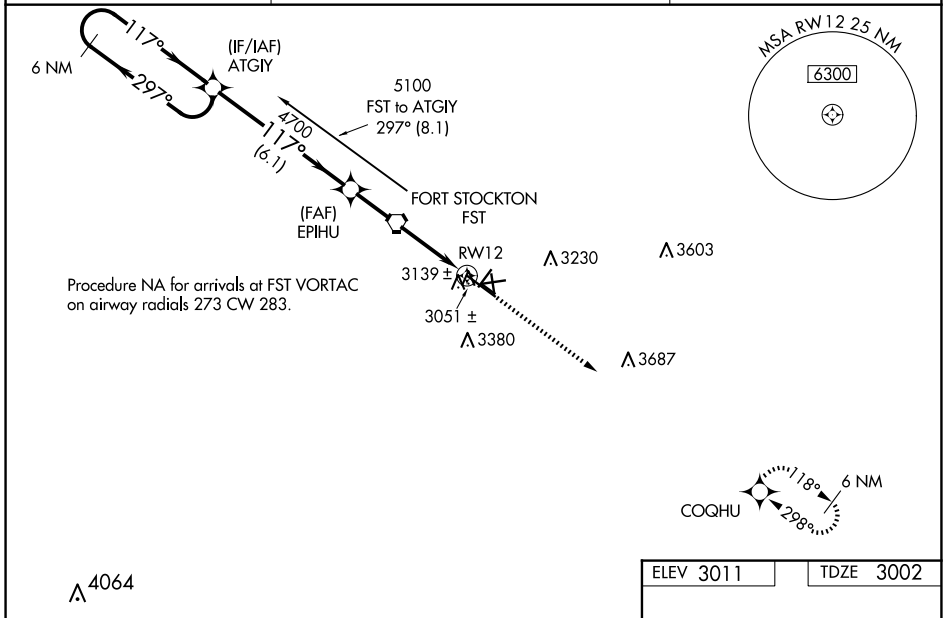
FORT STOCKTON-PECOS COUNTY (F'ST)

RNP APCH.

▼ For uncompensated Baro-VNAV systems, LNAV/VNAV NA below -21°C (-5°F) or above 43°C (109°F). When local altimeter setting not received, use Pecos altimeter setting and increase all DA 152 feet and all MDA 160 feet, increase LPV visibility ½ mile all Cats, LNAV/VNAV visibility ½ mile all Cats, LNAV Cat C/D visibility ½ mile, Circling Cat C visibility ¾ mile, Cat D visibility ½ mile. Baro-VNAV and VDP NA when using Pecos altimeter setting. Circling NA to Rwy's 7-25, 11-29 and 16-34. Circling Rwy 3, 21, 30 NA at night.

MISSED APPROACH: Climb to 5200 direct COGHU and hold.

ASOS 118.525	ALBUQUERQUE CENTER 135.875 292.15	UNICOM 122.8 (CTAF) 0
------------------------	---	---------------------------------



CATEGORY	A	B	C	D
LPV DA	3252-1 250 (300-1)			
LNAV/VNAV DA	3409-1½ 407 (400-1½)			
LNAV MDA	3480-1	478 (500-1)	3480-1¼ 478 (500-1¼)	3480-1½ 478 (500-1½)
CIRCLING	3540-1 529 (600-1)	3660-1 649 (700-1)	3740-2 729 (800-2)	3760-2½ 749 (800-2½)

SC-3, 14 MAY 2026 to 11 JUN 2026

SC-3, 14 MAY 2026 to 11 JUN 2026